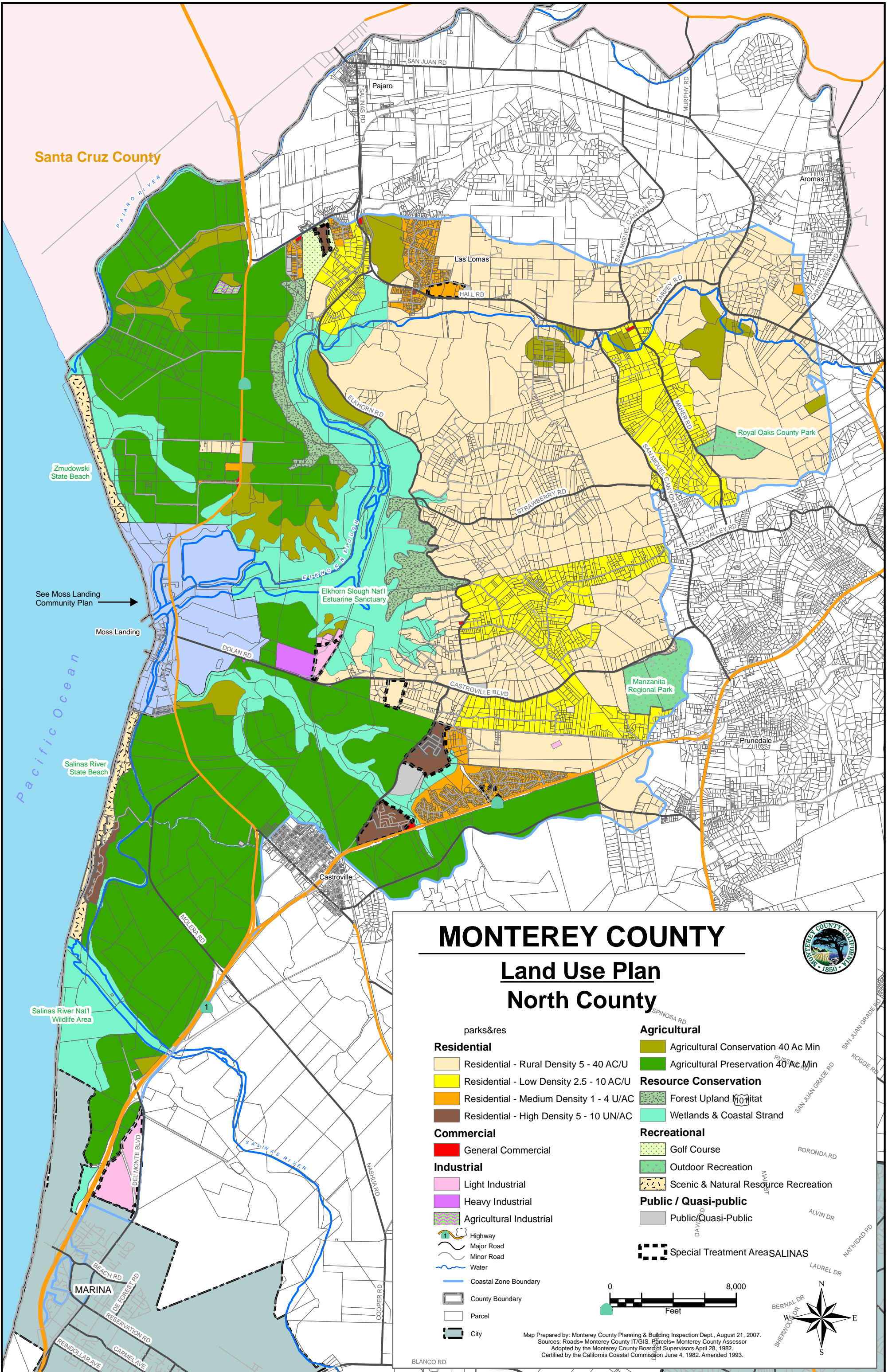


Santa Cruz County

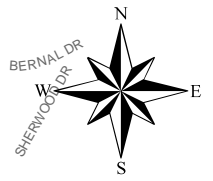
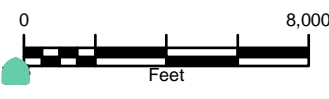


# MONTEREY COUNTY

## Land Use Plan North County



- Residential**
  - Residential - Rural Density 5 - 40 AC/U
  - Residential - Low Density 2.5 - 10 AC/U
  - Residential - Medium Density 1 - 4 U/AC
  - Residential - High Density 5 - 10 UN/AC
- Commercial**
  - General Commercial
- Industrial**
  - Light Industrial
  - Heavy Industrial
  - Agricultural Industrial
- Agricultural**
  - Agricultural Conservation 40 Ac Min
  - Agricultural Preservation 40 Ac Min
- Resource Conservation**
  - Forest Upland Habitat
  - Wetlands & Coastal Strand
- Recreational**
  - Golf Course
  - Outdoor Recreation
  - Scenic & Natural Resource Recreation
- Public / Quasi-public**
  - Public/Quasi-Public
- Special Treatment Area**
  - SALINAS
- Other Features**
  - Highway
  - Major Road
  - Minor Road
  - Water
  - Coastal Zone Boundary
  - County Boundary
  - Parcel
  - City



Map Prepared by: Monterey County Planning & Building Inspection Dept., August 21, 2007.  
Sources: Roads= Monterey County IT/GIS. Parcels= Monterey County Assessor  
Adopted by the Monterey County Board of Supervisors April 28, 1982.  
Certified by the California Coastal Commission June 4, 1982. Amended 1993.