

# Developing and Implementing a New Public Pool Plan Check Form

Ismael Chavira, REHS



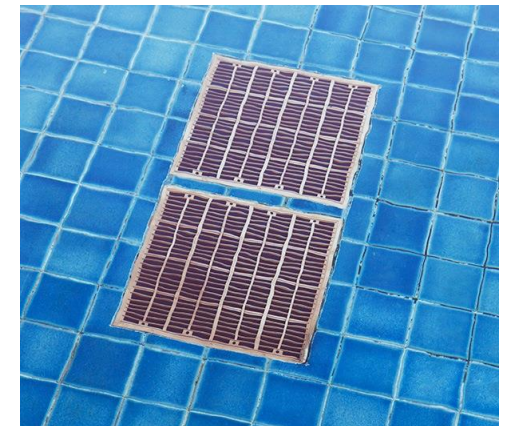
# Identified two areas that require updates:

1. New Health and Safety Codes (HSC) are not addressed in the current plan check form
  - Virginia Graham Baker requirement form
2. EHB policies
  - Turnover/ flow rate form
  - Flowmeter form

	POOL	SPA	UNITS
Volume			(gallons)
Turnover			(hours)
Flow rate			(gallons per minute)
Pressure gauge [influent]			(psi)
Pressure gauge [effluent]			(psi)
Occupancy load			(maximum bathers allowed)

Calculations:  
To calculate average of depth: depth A \_\_\_\_ + depth B \_\_\_\_ + depth C \_\_\_\_ ÷ by \_\_\_\_ number of different depths = \_\_\_\_ average depth (ft).  
To calculate the Area: width (ft.) \_\_\_\_ x Length (ft.) \_\_\_\_ = Area in ft.<sup>2</sup>.  
To calculate volume: width (ft.) \_\_\_\_ x Length (ft.) \_\_\_\_ x Depth \_\_\_\_ (average depth) x 7.5 = Volume (gallons).  
To calculate Flow Rate for pool of 6-hour turnover: [Volume \_\_\_\_ gallons ÷ 360 minutes] = Flow Rate (\_\_\_\_ gallons per minute).  
To calculate Flow rate for spa of 0.5-hour turnover: [Volume \_\_\_\_ gallons ÷ 30 minutes] = Flow Rate (\_\_\_\_ gallons per minute).  
To calculate Pool occupancy: [Area \_\_\_\_ -20 sq. ft. per person] = \_\_\_\_ occupancy load (maximum bathers allowed).  
To calculate spa occupancy: [Area \_\_\_\_ -10 sq. ft. per person] = \_\_\_\_ load (maximum bathers allowed).

Pool Spa Calculators 10/01/01 © 10/10/01





## The following deficiencies were identified from our current form:

1. Current plan check form is obsolete, cumbersome and does not address all HSC
2. Receiving inaccurate and/ or incomplete project description from the contact person
3. Loss of time by clerical staff during processing
4. Loss of time during review and/or pre-opening inspection (ping pong effect)

## The following will be the objectives after redesign:

1. Implement policies that will promote pool safety
2. Will assist the pool operator with compliance requirements
3. Increase form's clarity resulting in less confusion
4. Increase compliance by addressing all HSC concerns



# How will the new pool plan check form get implemented? – 3 Step Process

## 1. **Create a new form that will include the requirements. Two types:**

Outline form - addresses EHB's requirements for plan check review or

Excel format - addresses HSC's concerns

## 2. **Stakeholder inputs** - By in from inspectors, supervisors, clerical support, and outside pool operators

## 3. **In house training**



# Stakeholders Interaction Chart

