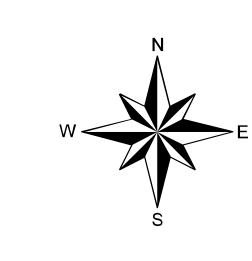


MONTEREY COUNTY

Land Use Plan South County

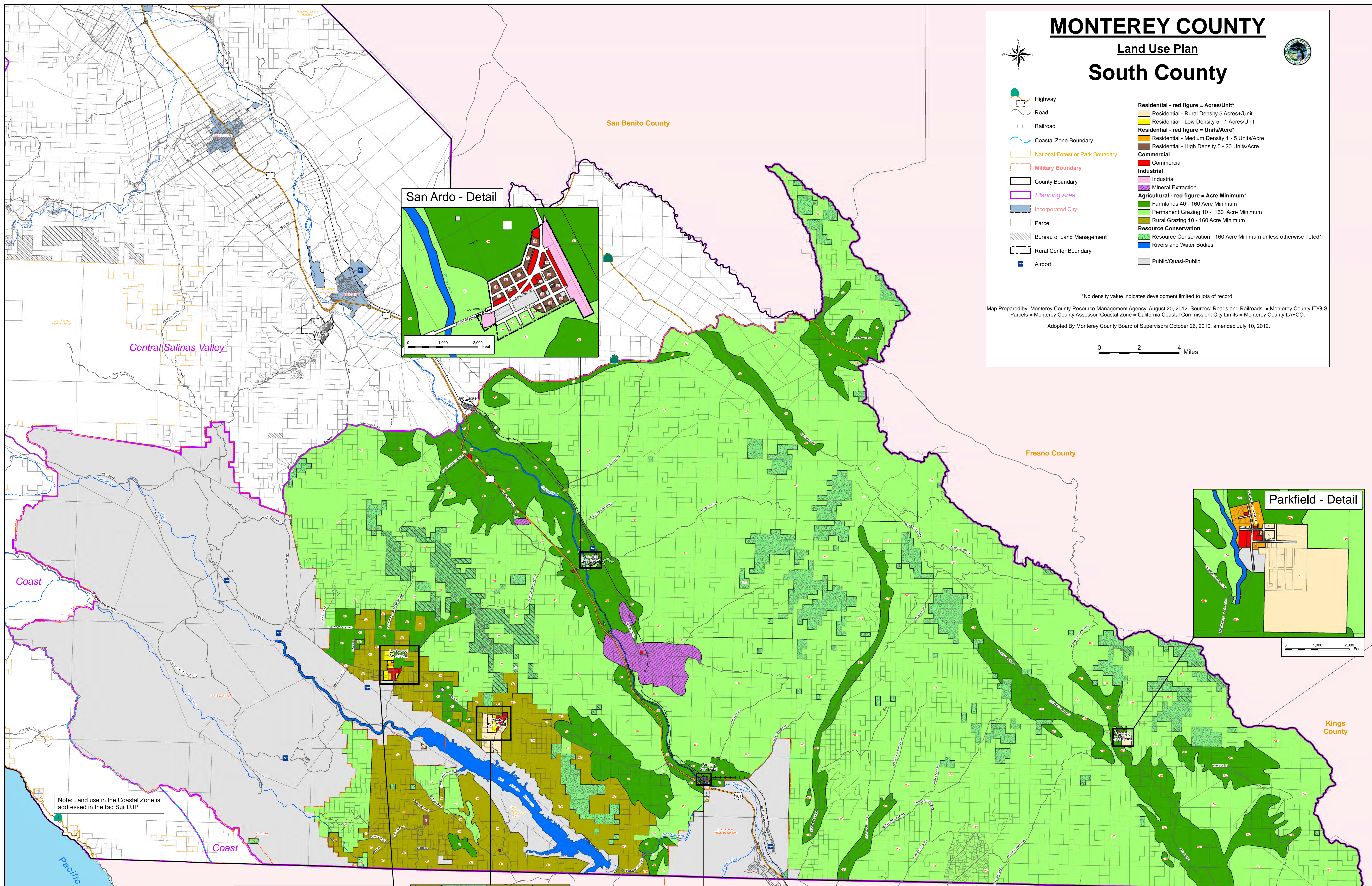
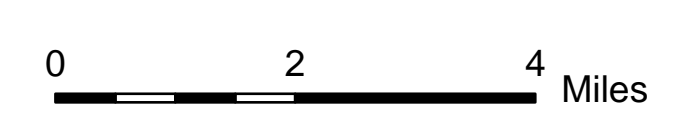


- Highway
 - Road
 - Railroad
 - Coastal Zone Boundary
 - National Forest or Park Boundary
 - Military Boundary
 - County Boundary
 - Planning Area
 - Incorporated City
 - Parcel
 - Bureau of Land Management
 - Rural Center Boundary
 - Airport
- Residential - red figure = Acres/Unit***
- Residential - Rural Density 5 Acres+/Unit
 - Residential - Low Density 5 - 1 Acres/Unit
- Residential - red figure = Units/Acre***
- Residential - Medium Density 1 - 5 Units/Acre
 - Residential - High Density 5 - 20 Units/Acre
- Commercial**
- Commercial
- Industrial**
- Industrial
 - Mineral Extraction
- Agricultural - red figure = Acre Minimum***
- Farmlands 40 - 160 Acre Minimum
 - Permanent Grazing 10 - 160 Acre Minimum
 - Rural Grazing 10 - 160 Acre Minimum
- Resource Conservation**
- Resource Conservation - 160 Acre Minimum unless otherwise noted*
 - Rivers and Water Bodies
- Public/Quasi-Public

*No density value indicates development limited to lots of record.

Map Prepared by: Monterey County Resource Management Agency, August 20, 2012. Sources: Roads and Railroads = Monterey County IT/GIS. Parcels = Monterey County Assessor, Coastal Zone = California Coastal Commission, City Limits = Monterey County LAFCO.

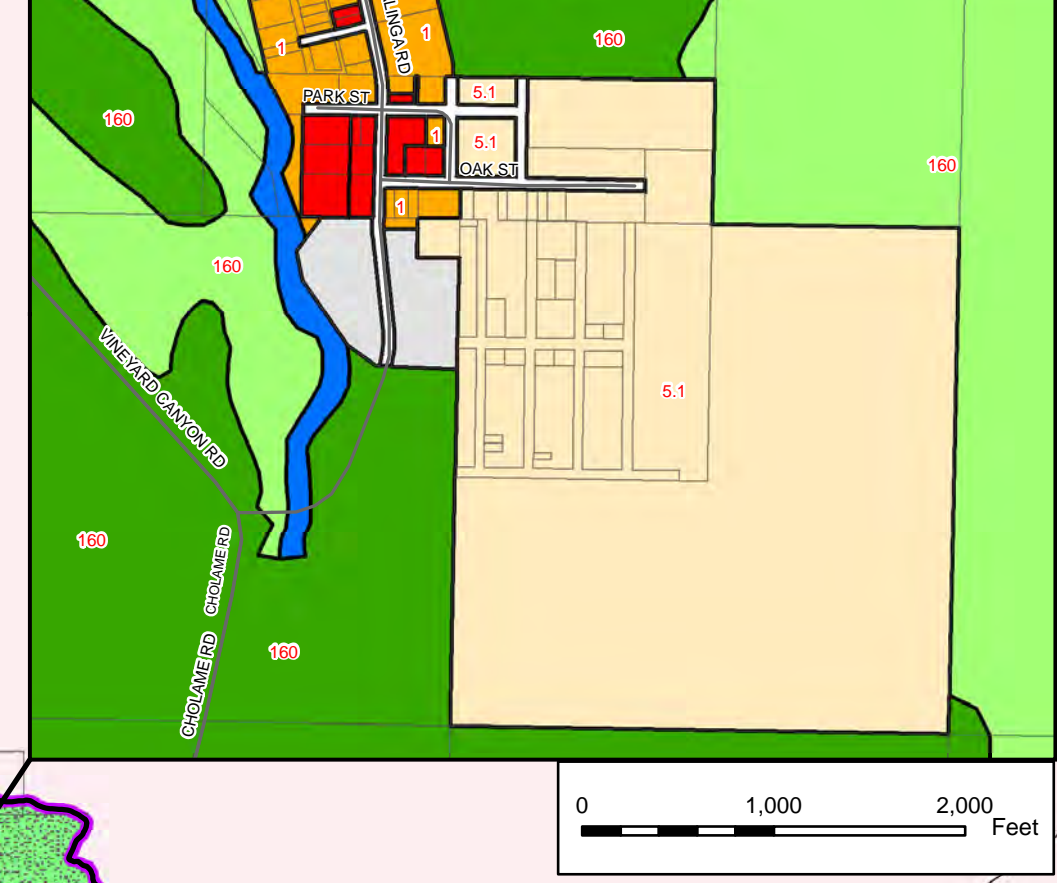
Adopted By Monterey County Board of Supervisors October 26, 2010, amended July 10, 2012.



San Ardo - Detail

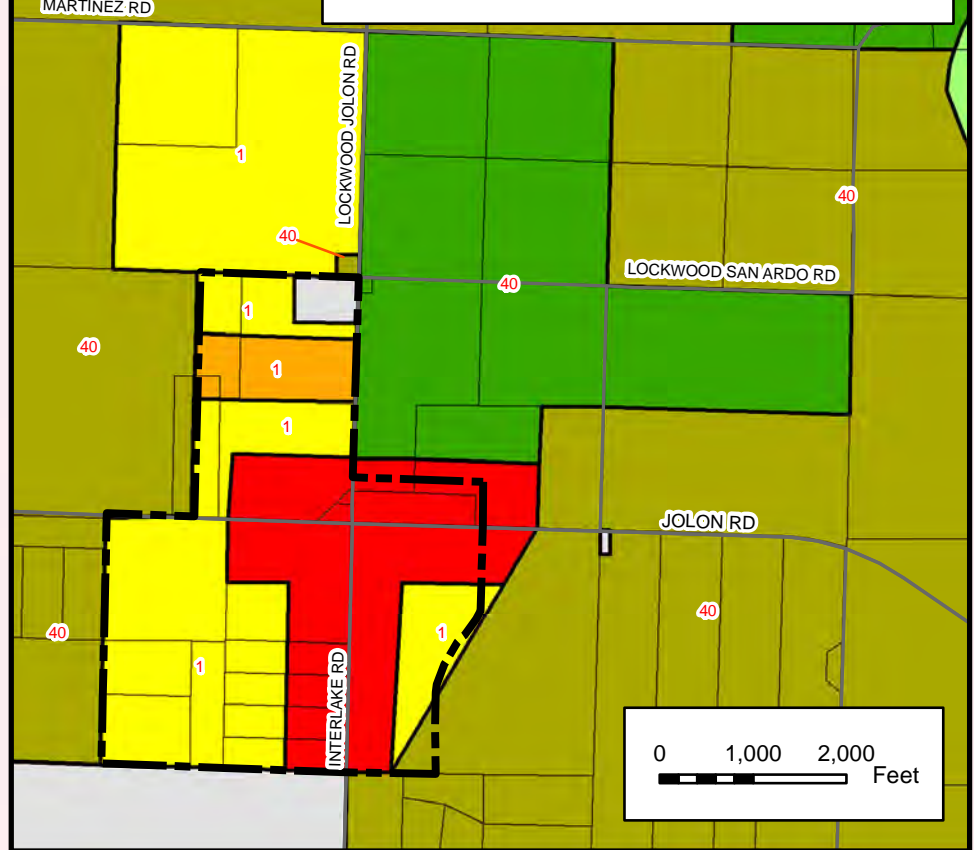


Parkfield - Detail

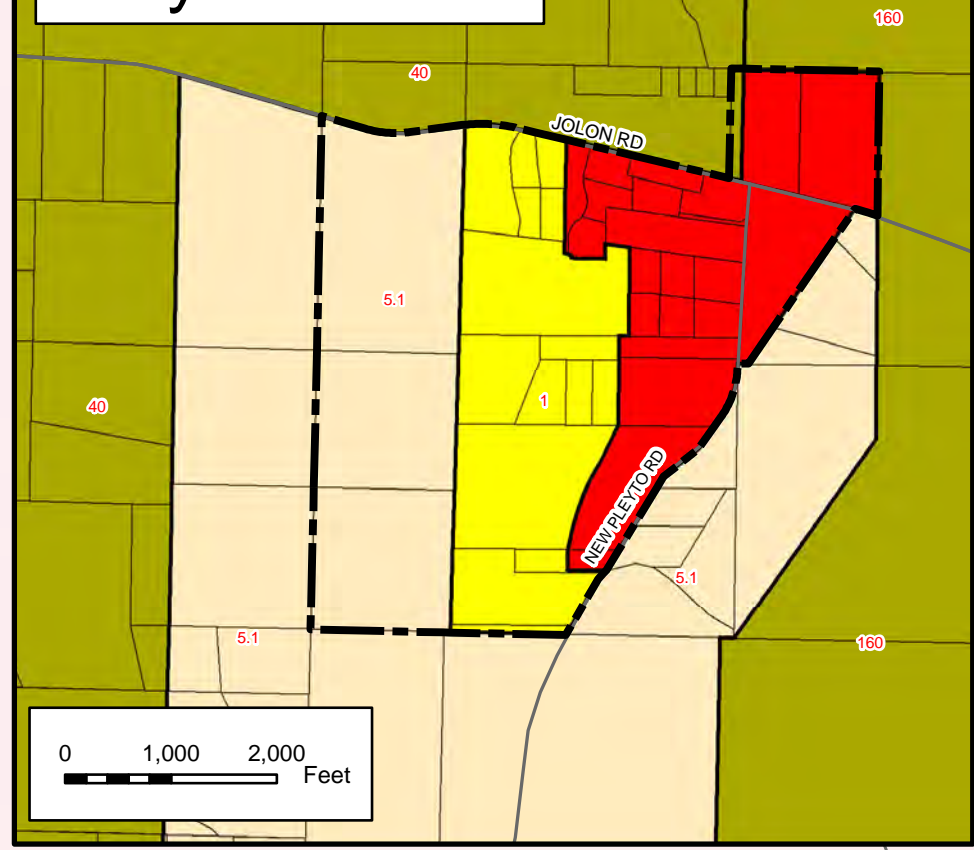


Note: Land use in the Coastal Zone is addressed in the Big Sur LUP

Lockwood - Detail



Pleyto - Detail



Bradley - Detail

