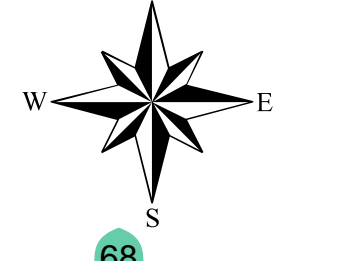


# MONTEREY COUNTY

## Land Use Plan

### Toro



- Highway
  - Road
  - Railroad
  - Park Boundary
  - Planning Area
  - City Limits
  - Parcel
  - Community Area Boundary
  - Special Treatment Area & Policy #
  - Rural Center Boundary
  - Affordable Housing Overlay
  - Development Limited to Lots of Record per Policy T-1.7.
- Residential - red figure = Acres/Unit\***
- Residential - Rural Density 5 Acres+/Unit
  - Residential - Low Density 5 - 1 Acres/Unit
- Residential - red figure = Units/Acre\***
- Residential - Medium Density 1 - 5 Units/Acre
- Mixed Use**
- Mixed Use
- Commercial**
- Commercial
  - Visitor Accommodations/Professional Offices
- Industrial**
- Industrial
  - Mineral Extraction
- Agricultural**
- Farmlands 40 Acre Minimum
  - Rural Grazing - density as noted\*
  - Permanent Grazing 40 Ac Min
- Resource Conservation**
- Resource Conservation - red figure = Acre Minimum\*
  - Public/Quasi-Public
  - Rivers and Water Bodies

\*No density value indicates development limited to lots of record.

Map Prepared by: Monterey County Resource Management Agency, July 15, 2011.  
Sources: Roads and Railroads = Monterey County IT/GIS; Parcels = Monterey County Assessor,  
City Limits = Monterey County LAFCO.  
Adopted by the Board of Supervisors October 26, 2010.

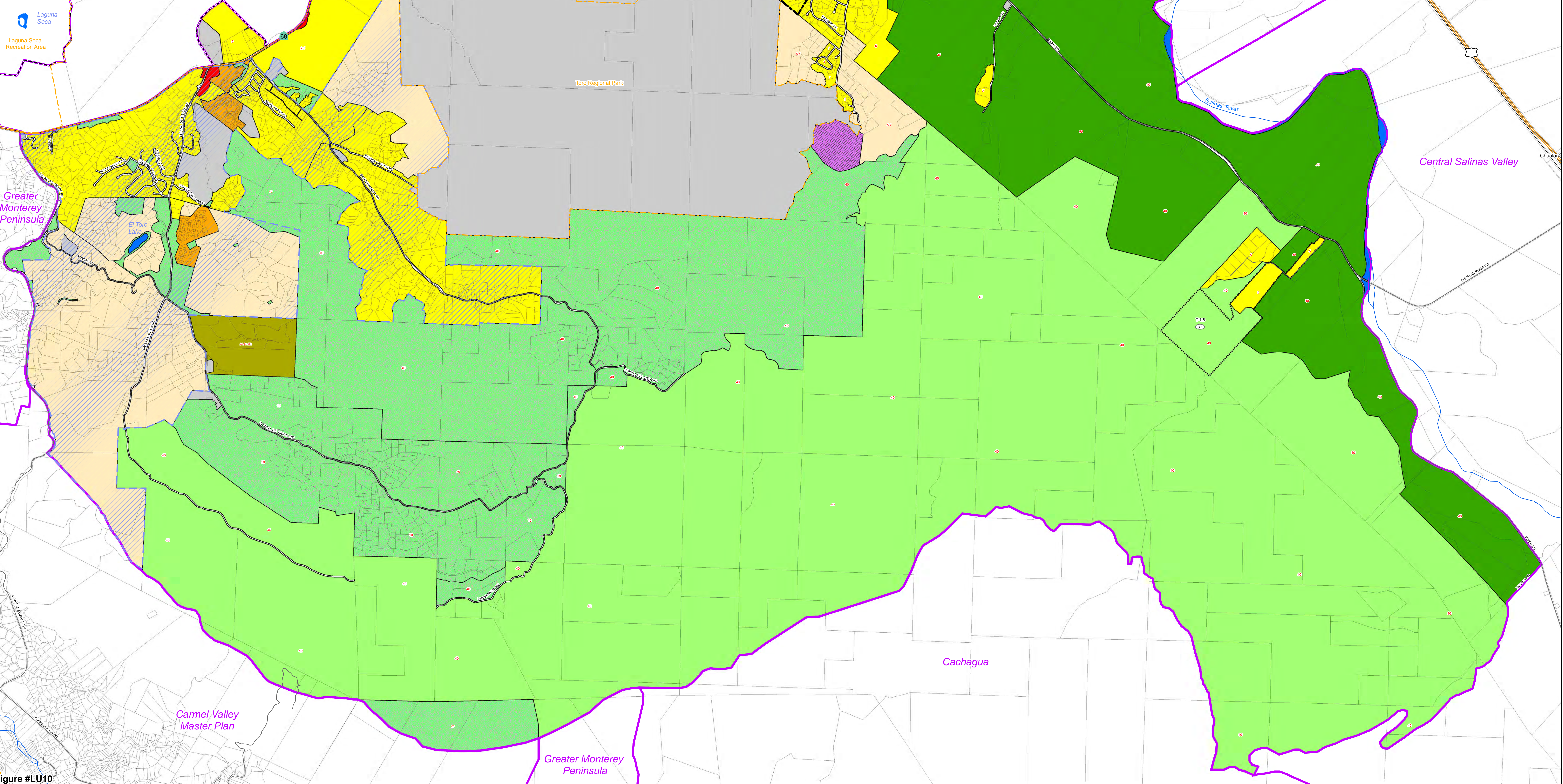
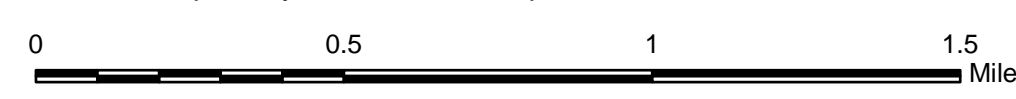


Figure #LU10