

# MONTEREY COUNTY



## Scenic Highway Corridors & Visual Sensitivity

### Greater Monterey Peninsula

- |                       |                                     |
|-----------------------|-------------------------------------|
| Highway               | <b>Scenic Highways &amp; Routes</b> |
| Roads                 | Existing                            |
| City Limit            | Proposed                            |
| Coastal Zone Boundary | <b>Visual Sensitivity</b>           |
| Planning Area         | Sensitive                           |
|                       | Highly Sensitive                    |
|                       | Critical Viewshed                   |

Map Produced by Monterey County Resource Management Agency, January 26, 2010.  
 Source: Roads and City Limits = Monterey County IT/GIS, Visual Sensitivity and Scenic Routes = Greater Monterey Peninsula Area Plan 1984.

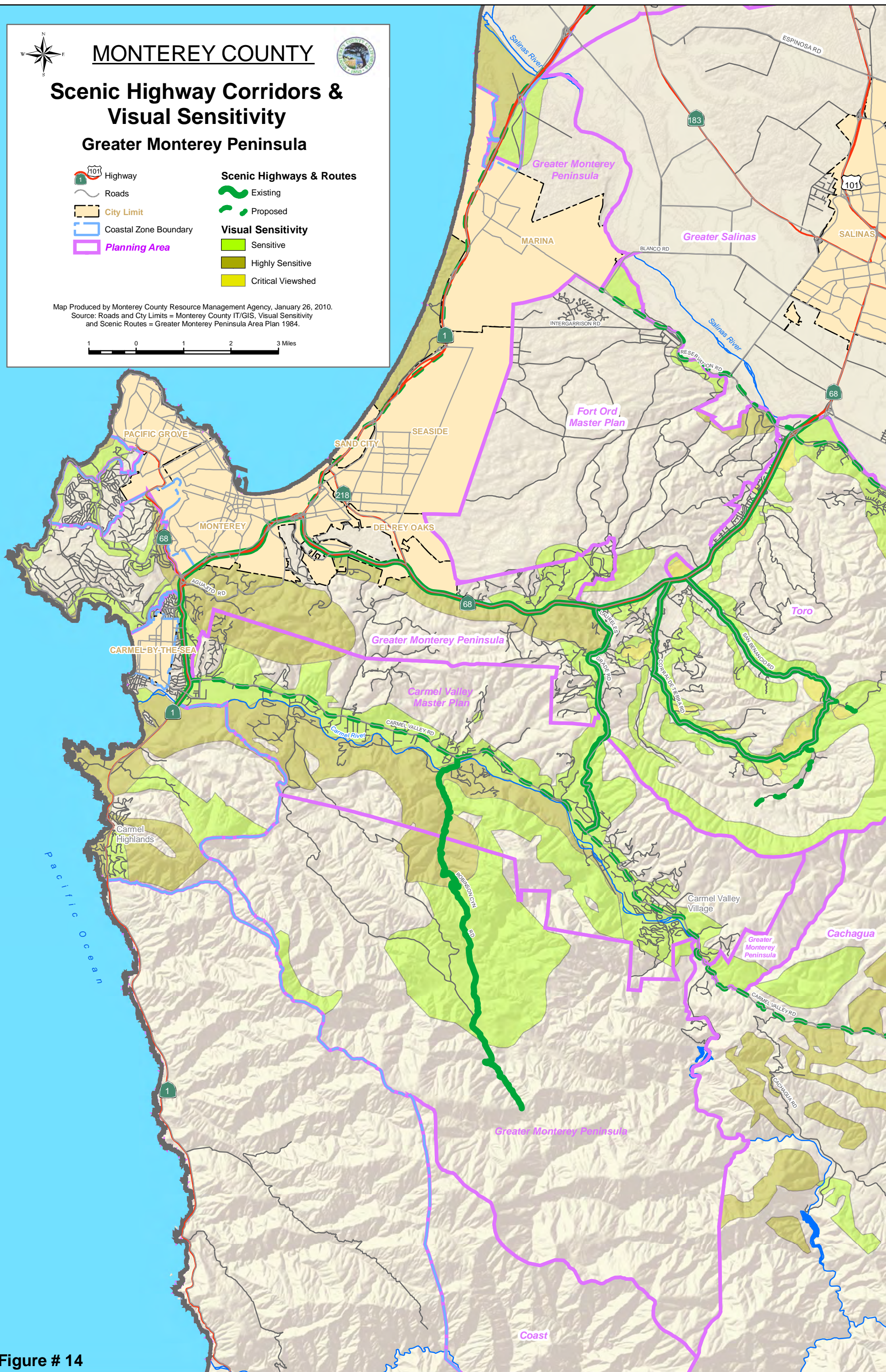
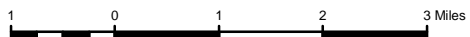


Figure # 14