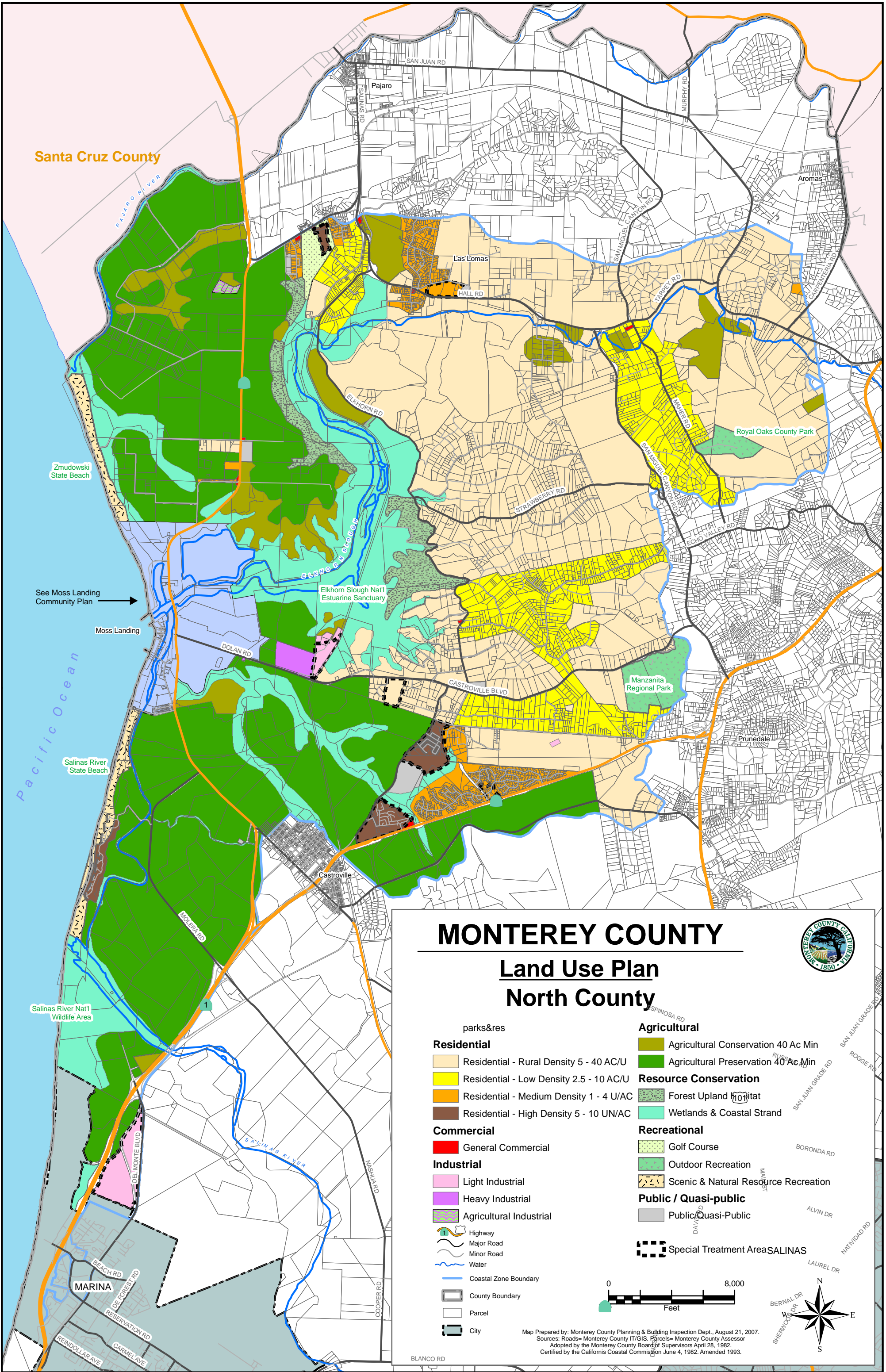


Santa Cruz County



MONTEREY COUNTY

Land Use Plan North County



- Residential**
 - Residential - Rural Density 5 - 40 AC/U
 - Residential - Low Density 2.5 - 10 AC/U
 - Residential - Medium Density 1 - 4 U/AC
 - Residential - High Density 5 - 10 UN/AC
 - Commercial**
 - General Commercial
 - Industrial**
 - Light Industrial
 - Heavy Industrial
 - Agricultural Industrial
 - Highway
 - Major Road
 - Minor Road
 - Water
 - Coastal Zone Boundary
 - County Boundary
 - Parcel
 - City
- Agricultural**
 - Agricultural Conservation 40 Ac Min
 - Agricultural Preservation 40 Ac Min
 - Resource Conservation**
 - Forest Upland Habitat
 - Wetlands & Coastal Strand
 - Recreational**
 - Golf Course
 - Outdoor Recreation
 - Scenic & Natural Resource Recreation
 - Public / Quasi-public**
 - Public/Quasi-Public
 - Special Treatment Area

Map Prepared by: Monterey County Planning & Building Inspection Dept., August 21, 2007.
 Sources: Roads= Monterey County IT/GIS. Parcels= Monterey County Assessor
 Adopted by the Monterey County Board of Supervisors April 28, 1982.
 Certified by the California Coastal Commission June 4, 1982. Amended 1993.