

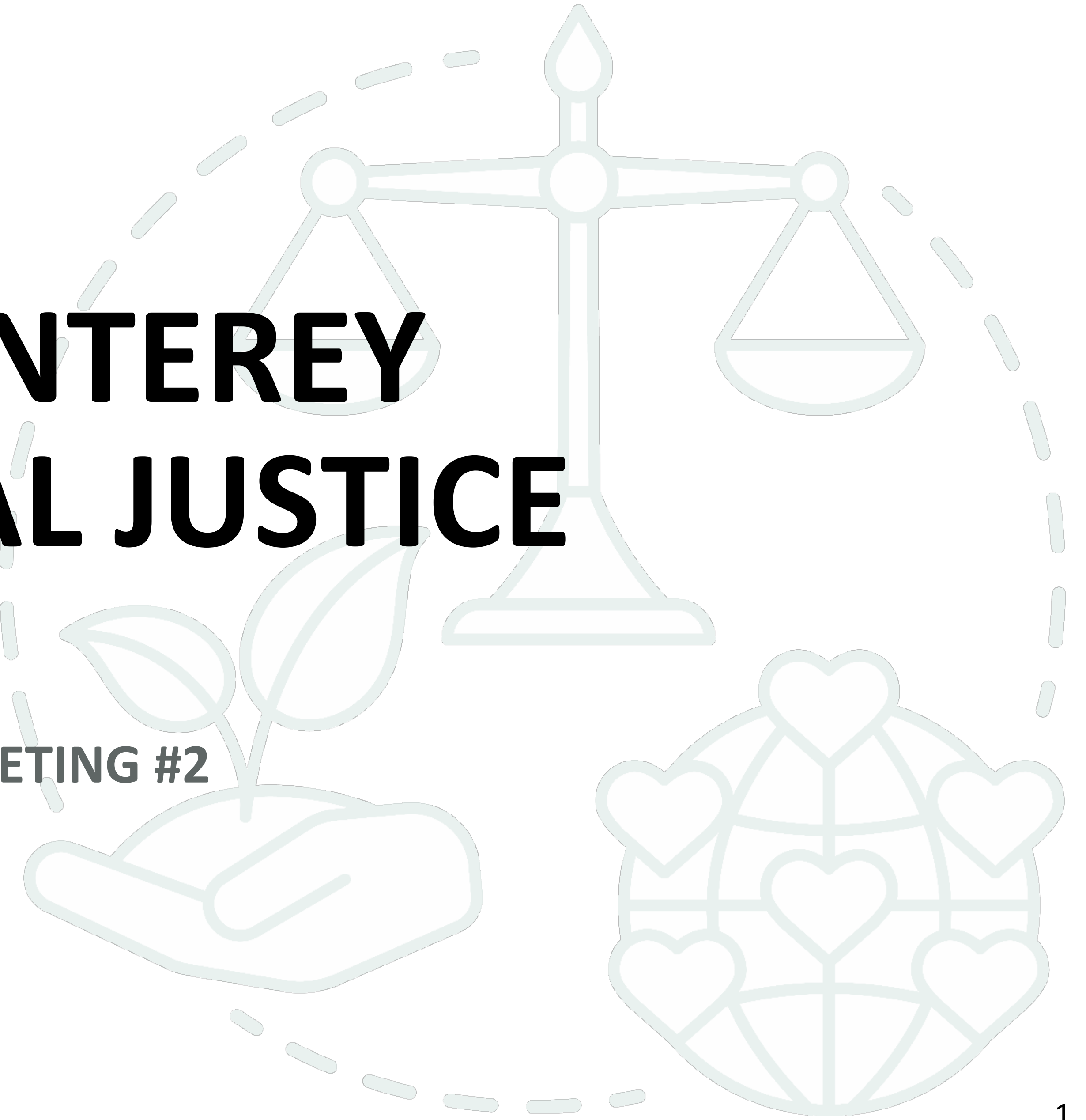
COUNTY OF MONTEREY ENVIRONMENTAL JUSTICE ELEMENT

COMMUNITY ADVISORY COMMITTEE MEETING #2

December 2023



Harris & Associates





PLANNING TEAM INTRODUCTIONS

PROJECT LEAD

Monterey County
Housing and
Community
Development
Department

PROJECT CONSULTANT

Harris &
Associates

PROJECT STAKEHOLDERS

Community
Advisory
Committee
and
General Public

PROJECT REVIEW AND ADOPTION

Planning
Commission
and
Board of
Supervisors

AGENDA

- Welcome and Introductions
- Overview of Outreach Efforts to Disadvantaged Communities
- Existing Conditions Assessment and Community Survey Results
- Evacuation Planning
- Timeline/Next Steps

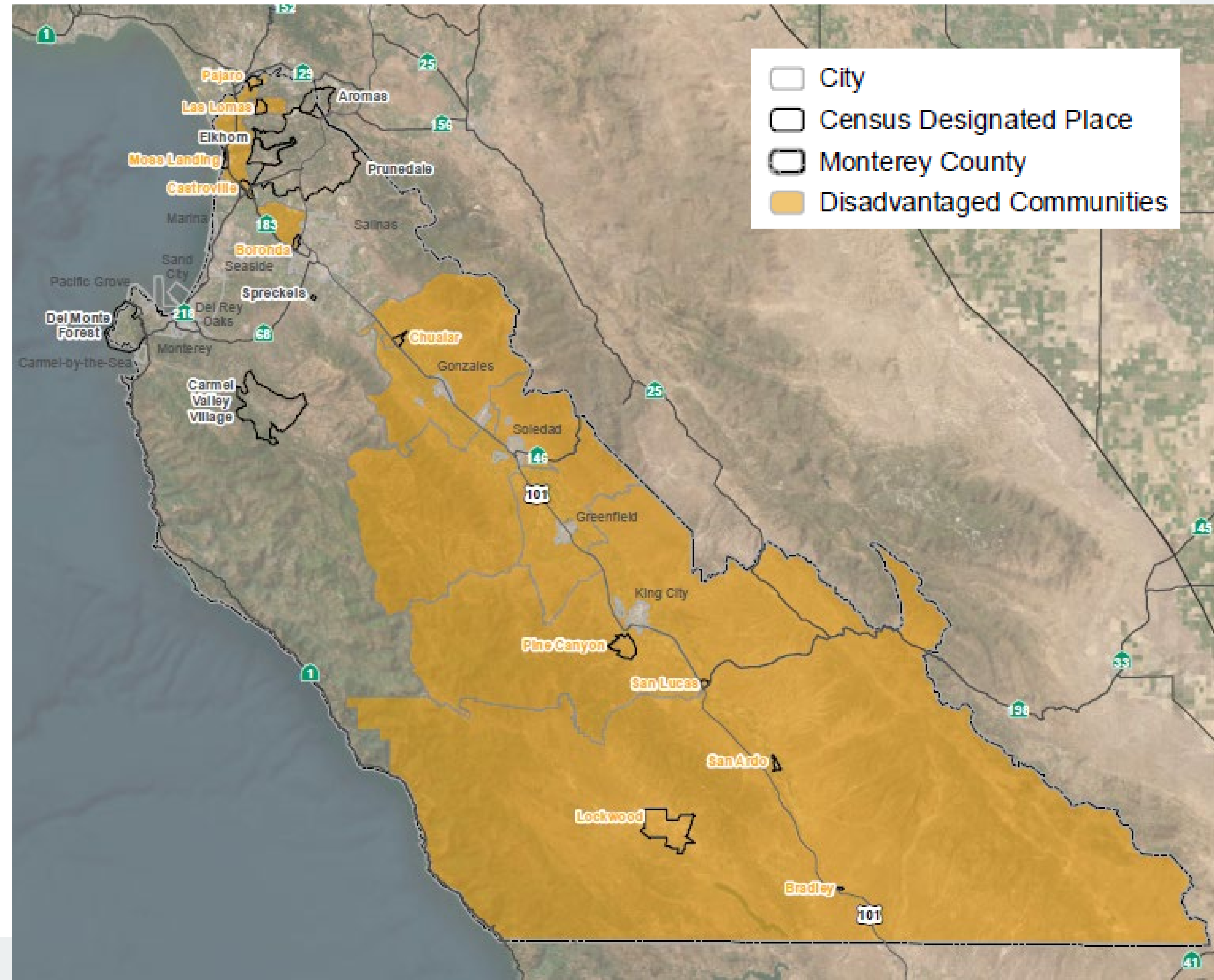




STATE DEFINED "DISADVANTAGED COMMUNITIES" IN MONTEREY COUNTY

34 census tracts including the following areas:

- Boronda
- Bradley
- Castroville
- Chualar
- Las Lomas
- Lockwood
- Moss Landing
- Pajaro
- Pine Canyon
- San Ardo
- San Lucas
- Other unincorporated county areas





OUTREACH EFFORTS TO DATE

Community Survey dates:
August 3rd - October 20th

Online Survey (English and Spanish versions):
20 questions

Mail-in (hardcopy) surveys:
11 of the 20 online survey questions

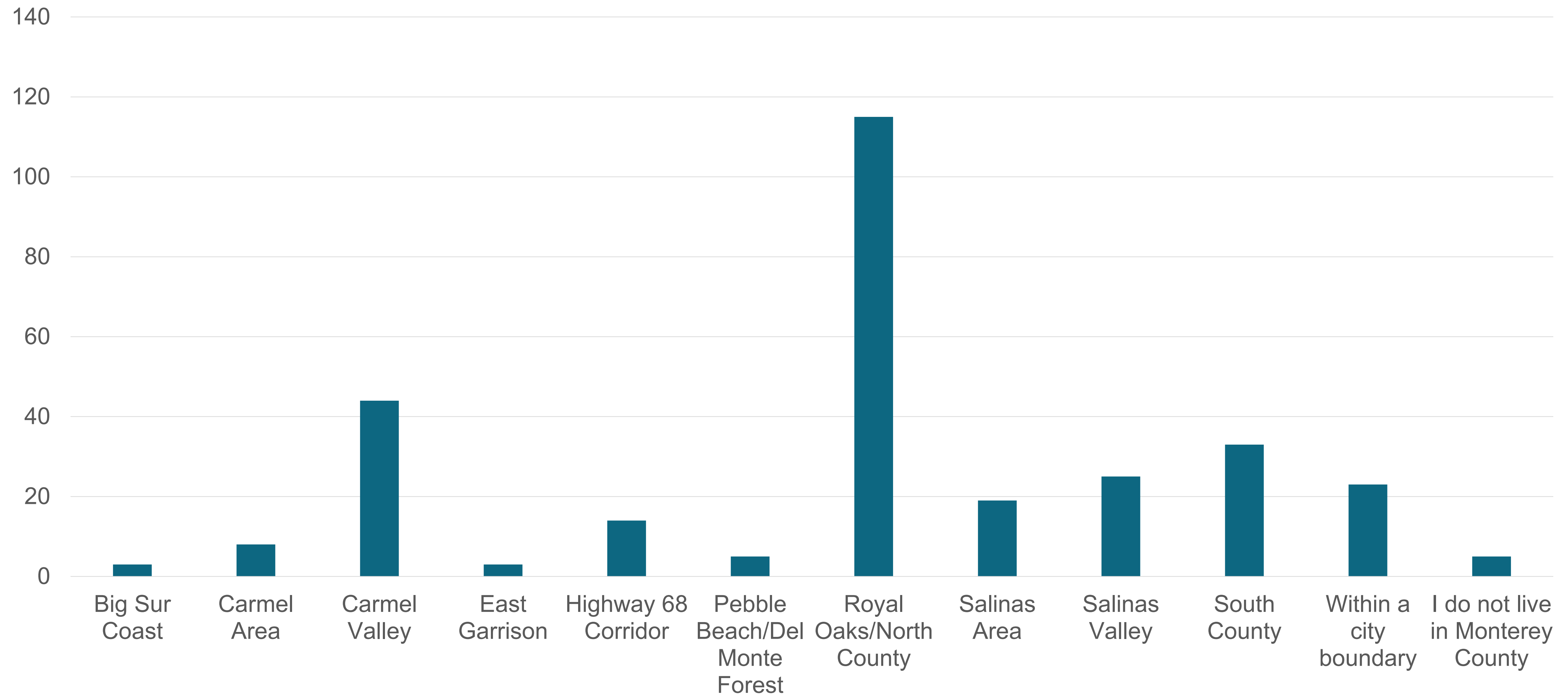
Displays at pop-up events and libraries: 2 of the 20 online survey questions

Total Responses (English, Spanish, Mail-in): 310

Results integrated throughout Existing Conditions Assessment key findings

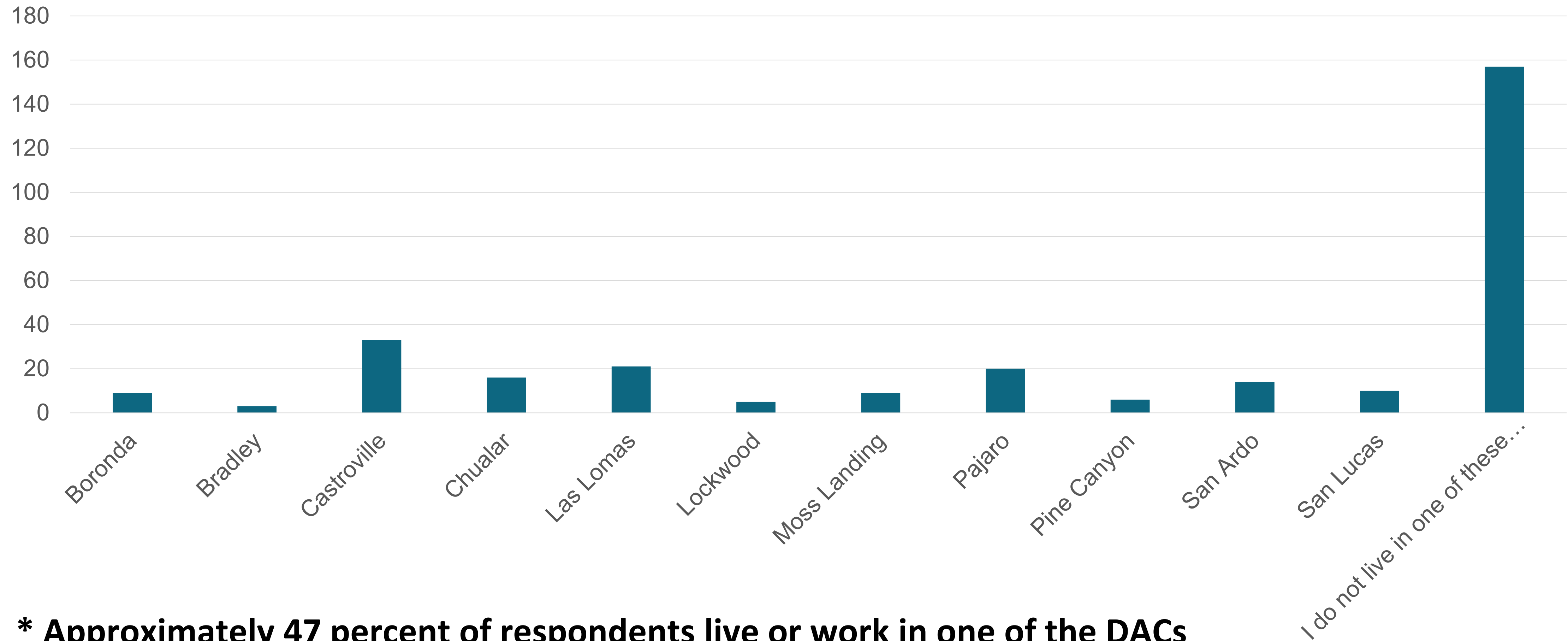


WHERE COMMUNITY SURVEY RESPONDENTS LIVE





AFFILIATING WITH A DISADVANTAGED COMMUNITY



*** Approximately 47 percent of respondents live or work in one of the DACs**



EXISTING CONDITIONS EVALUATED



Pollution exposure



Access to public facilities and services



Access to healthy food



Access to physical activity and recreational opportunities



Access to safe and sanitary homes

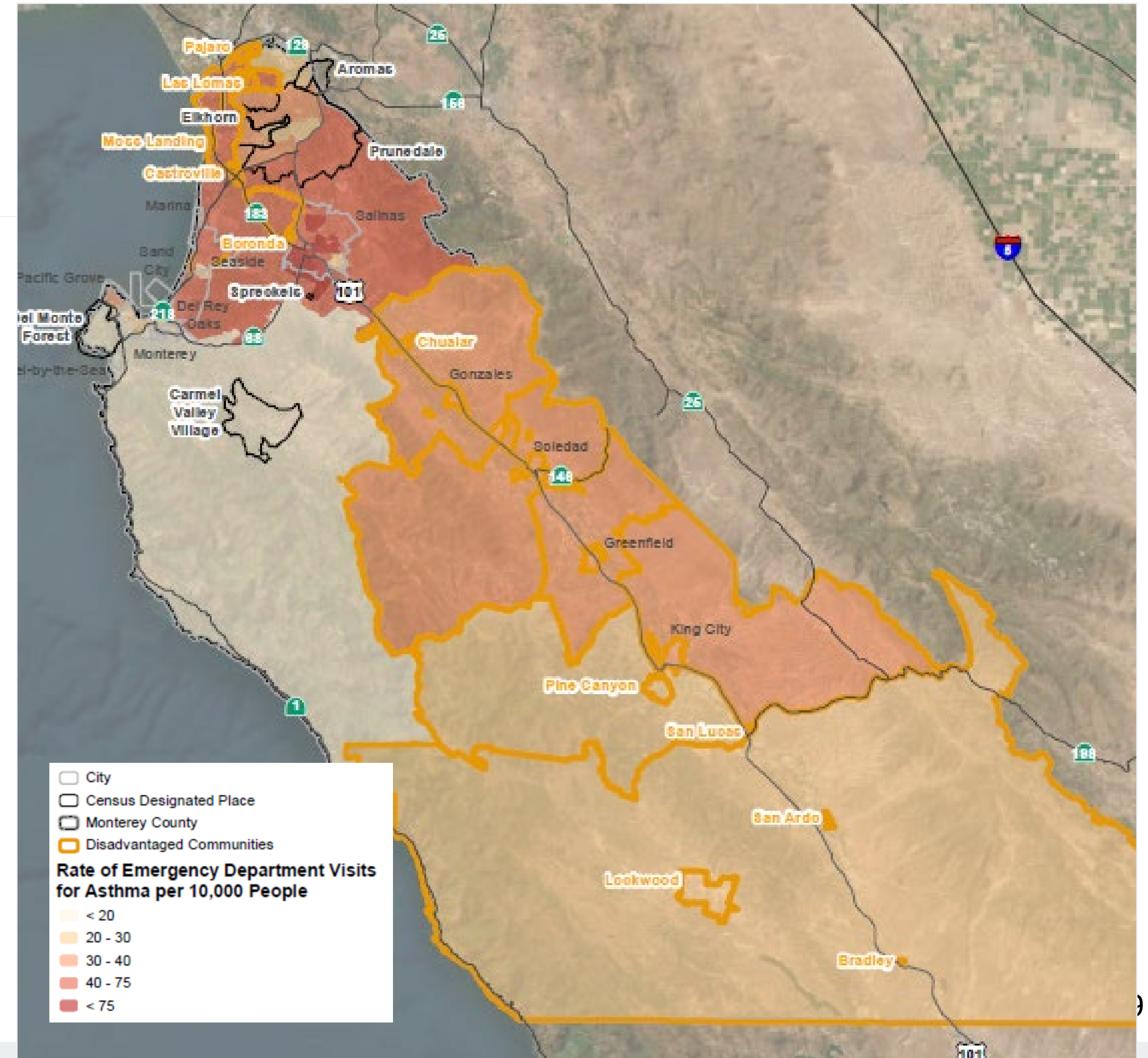


Exposure to unique or compounded health risks (i.e., climate change)



POLLUTION EXPOSURE

- **EJCAC Meeting #1**
 - Ranked #2 out of 6 topic areas
 - Safe and affordable drinking water
- **Existing Conditions Assessment**
 - Asthma
- **Community Survey Primary Concerns**
 - Air pollution from freeways/roadways
 - Noise pollution
 - Trash and debris
 - Safe and affordable water



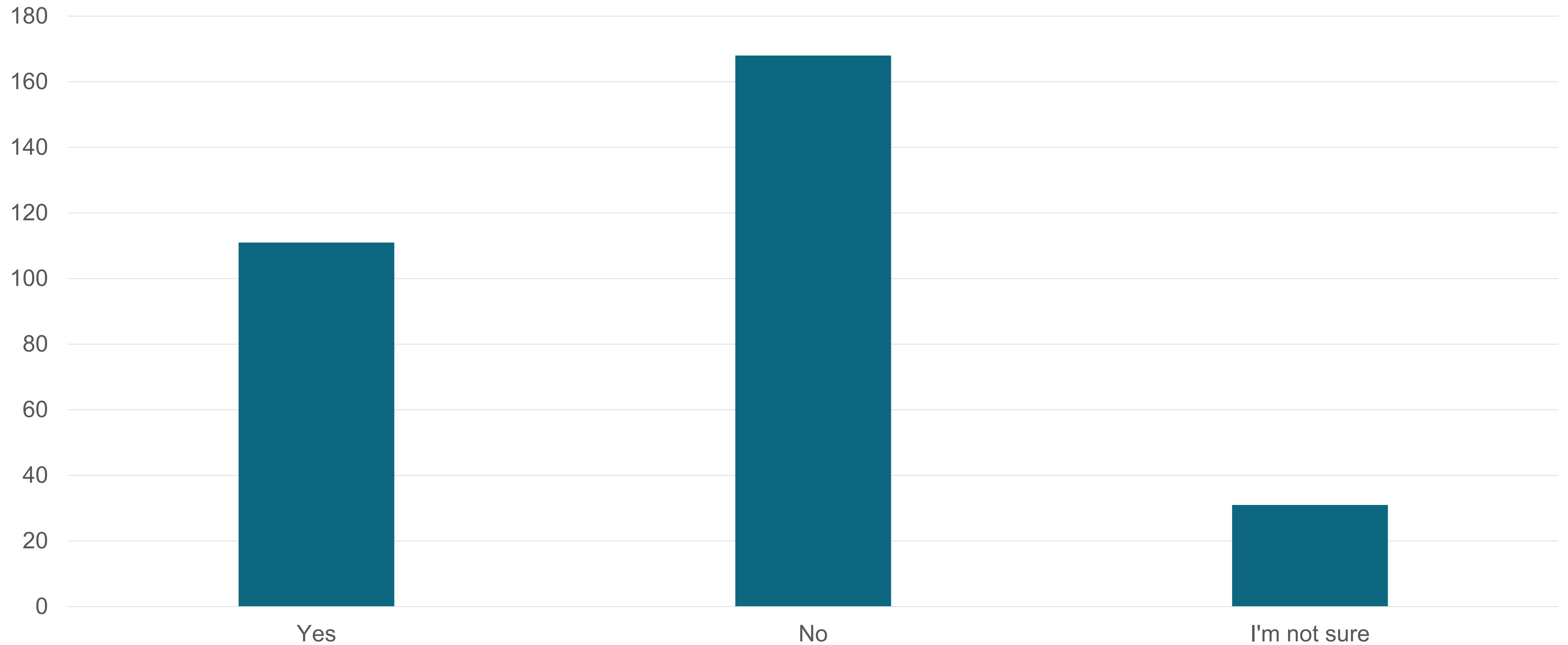


TYPES OF POLLUTION IN RESPONDENTS' COMMUNITIES



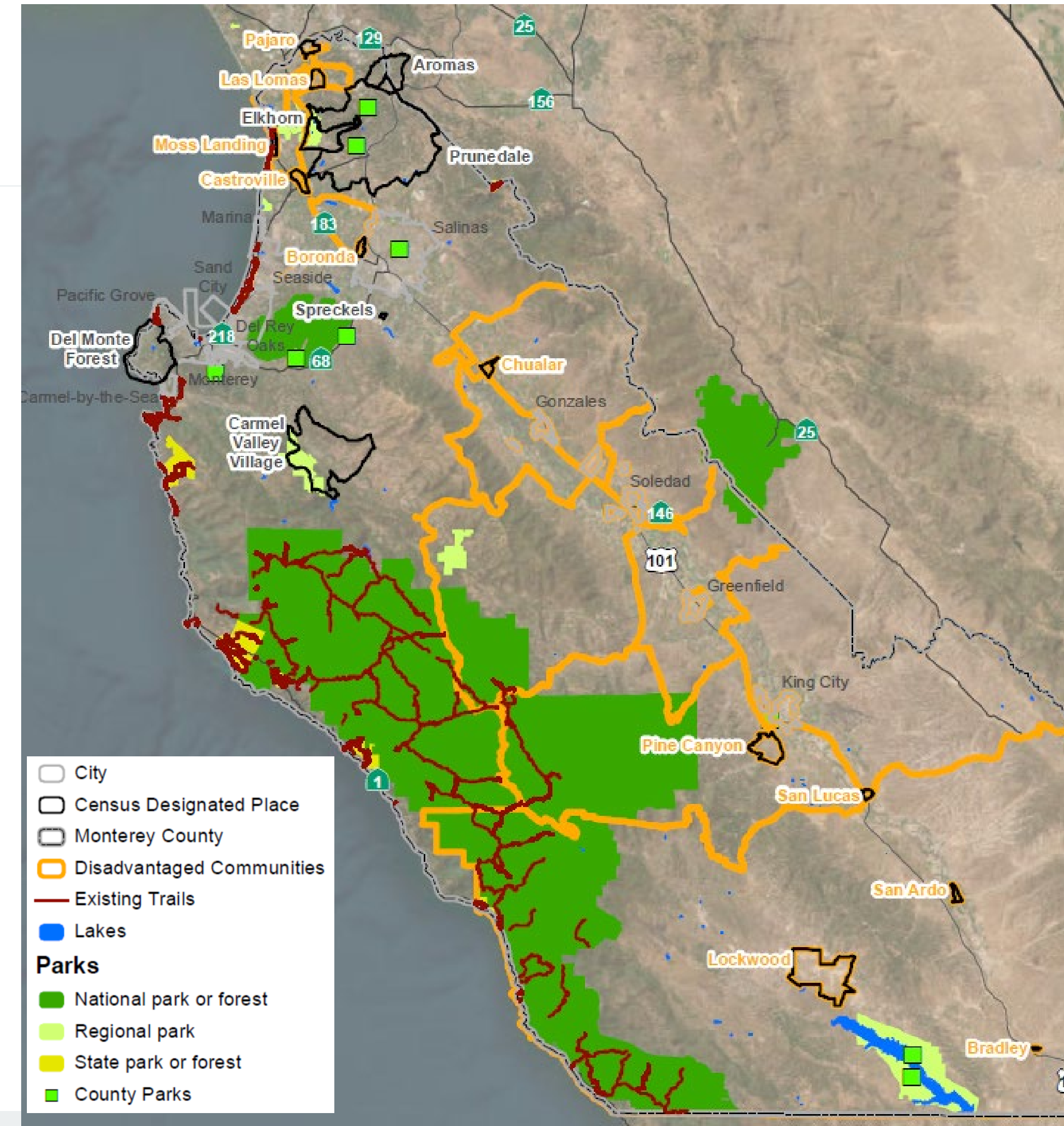


IF RESPONDENTS FEEL SAFE DRINKING TAP WATER



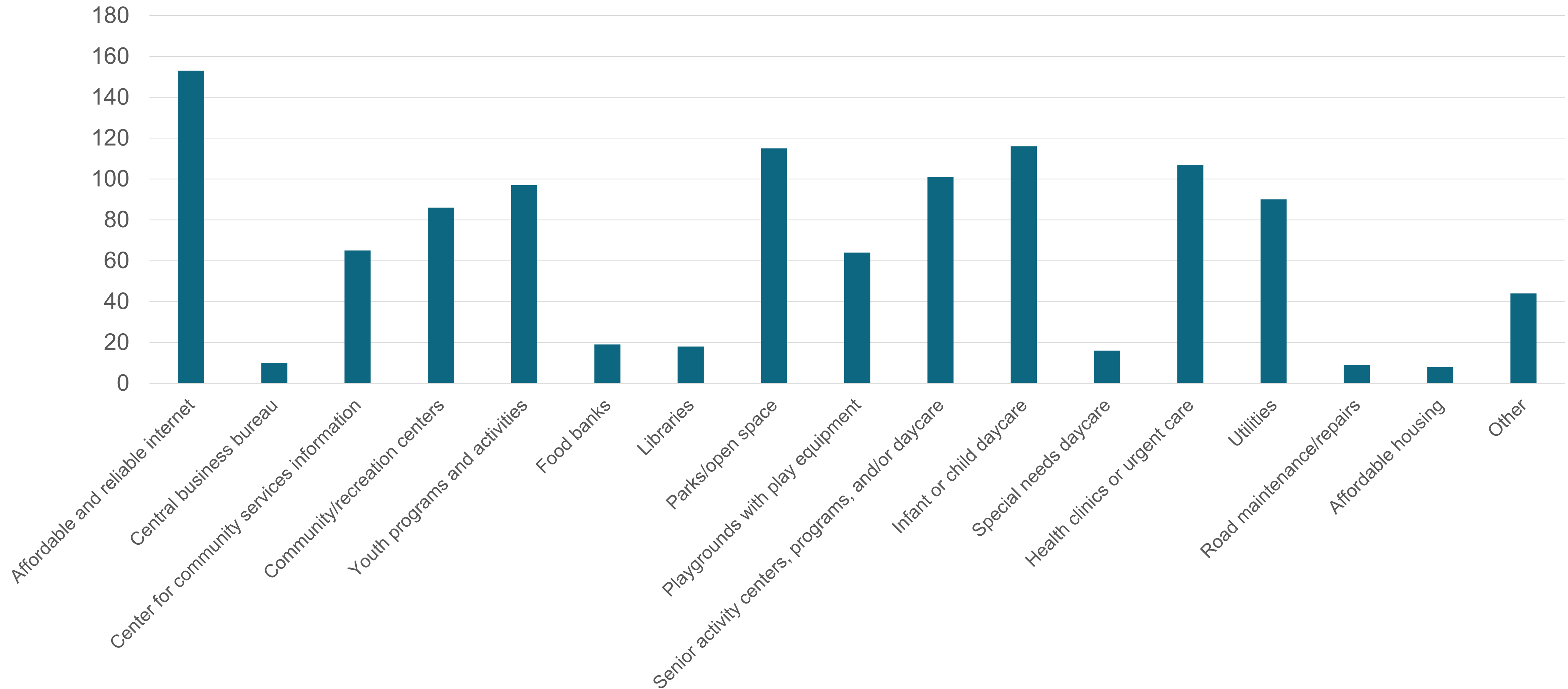
ACCESS TO PUBLIC FACILITIES AND SERVICES

- **EJCAC Meeting #1**
 - Ranked #1 out of 6 topic areas
- **Existing Conditions Assessment**
 - National, state, and County/regional parks
- **Community Survey Primary Concerns**
 - Affordable and reliable internet, cell, and power
 - Parks/open space
 - Infant and child daycare
 - Affordable/nearby healthcare



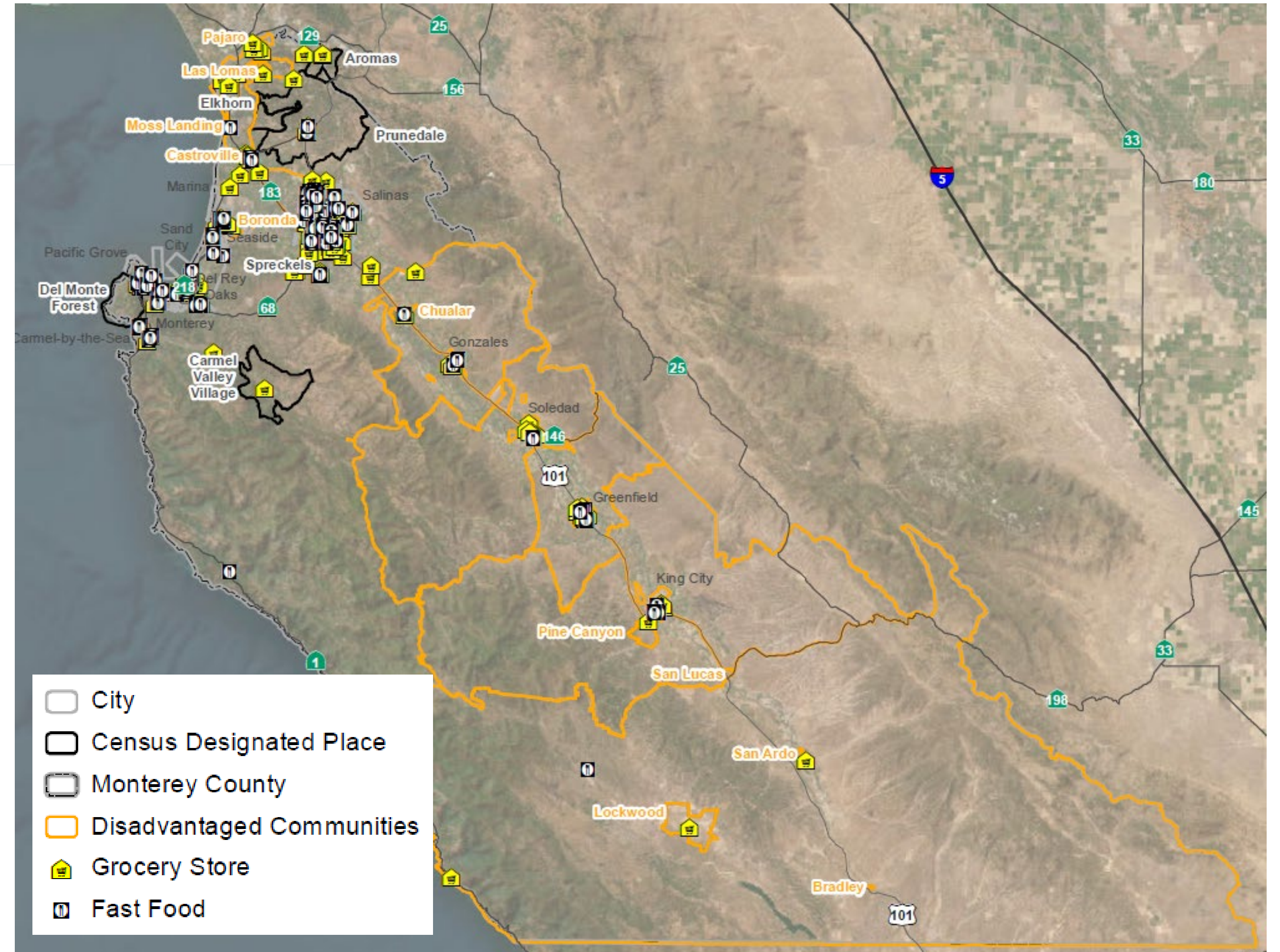


MOST NEEDED PUBLIC FACILITIES/SERVICES



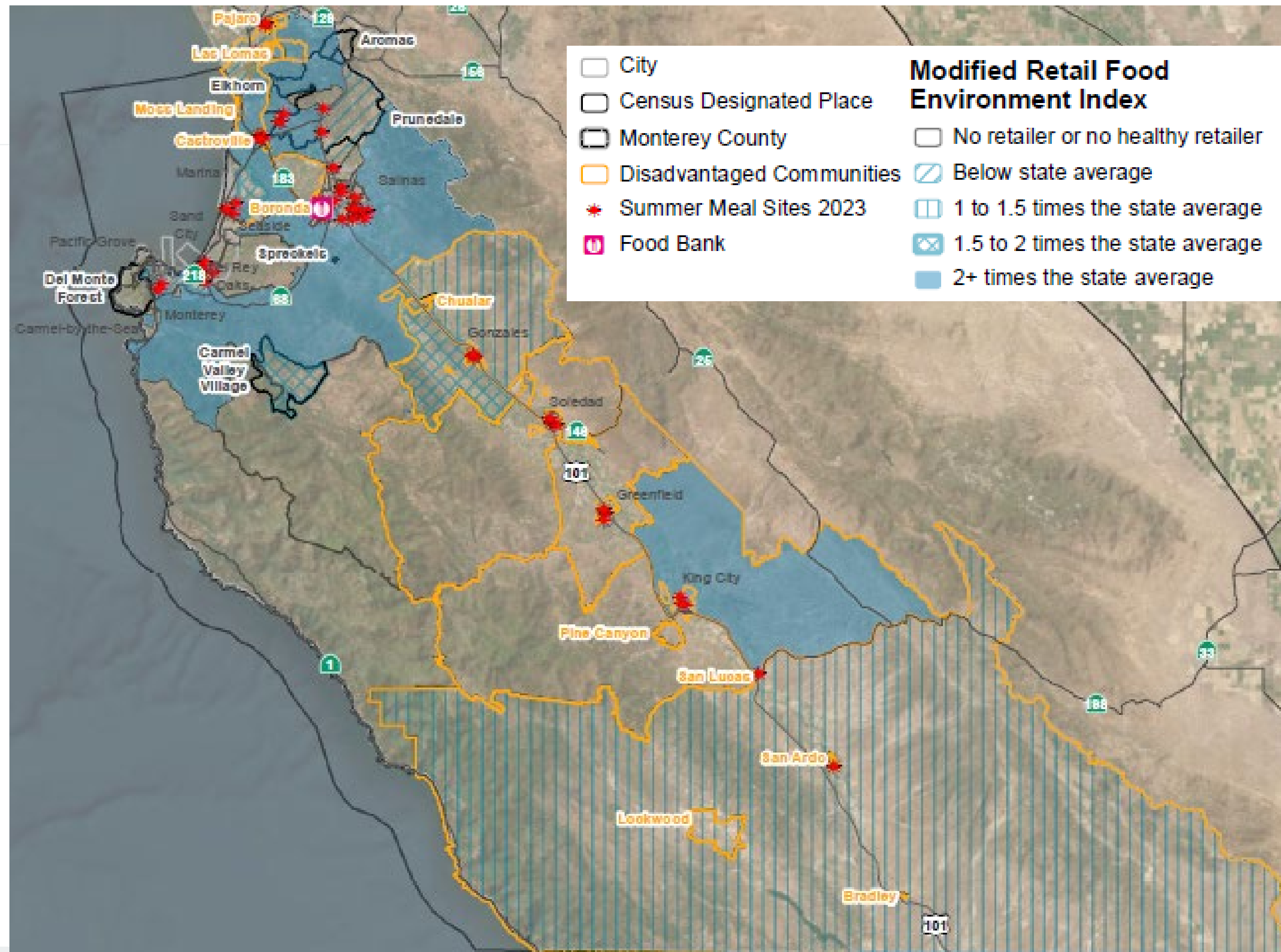
ACCESS TO HEALTHY FOOD

- **EJCAC Meeting #1**
 - Ranked #5 out of 6 topic areas
- **Existing Conditions Assessment**
 - Grocery stores
 - Fast Food
- **Community Survey Primary Concerns**
 - Stores/markets with healthy options
 - Affordable produce/food purchase assistance
 - Community gardens



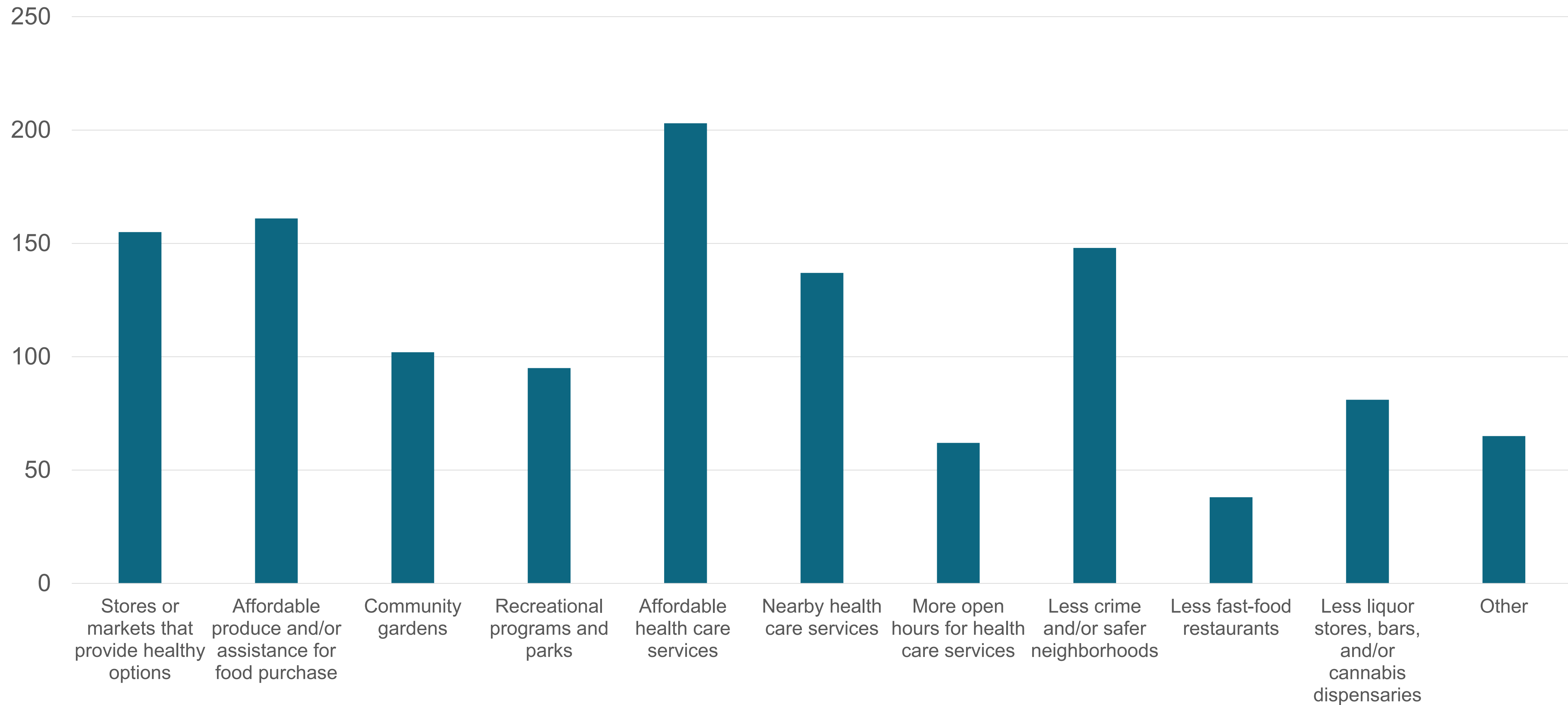


ACCESS TO HEALTHY FOOD



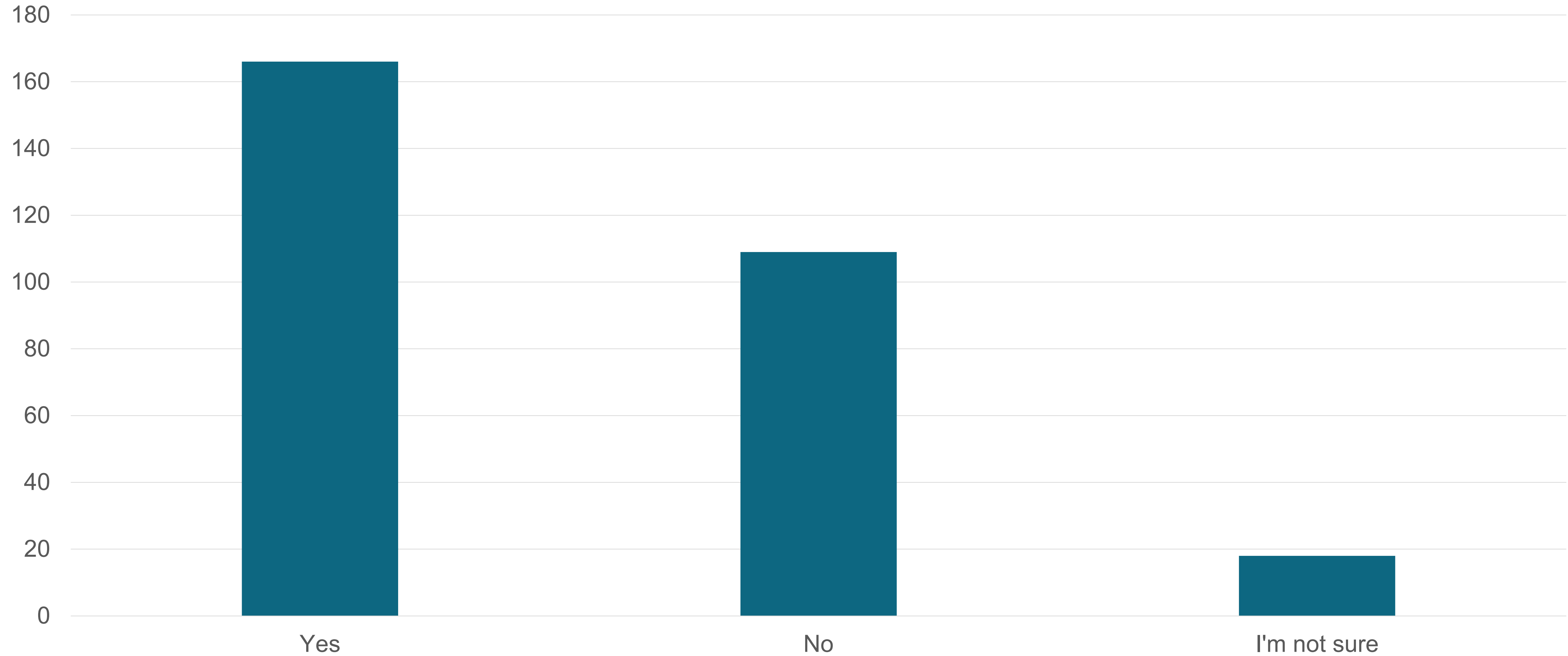


WHAT RESPONDENTS NEED TO BE HEALTHY



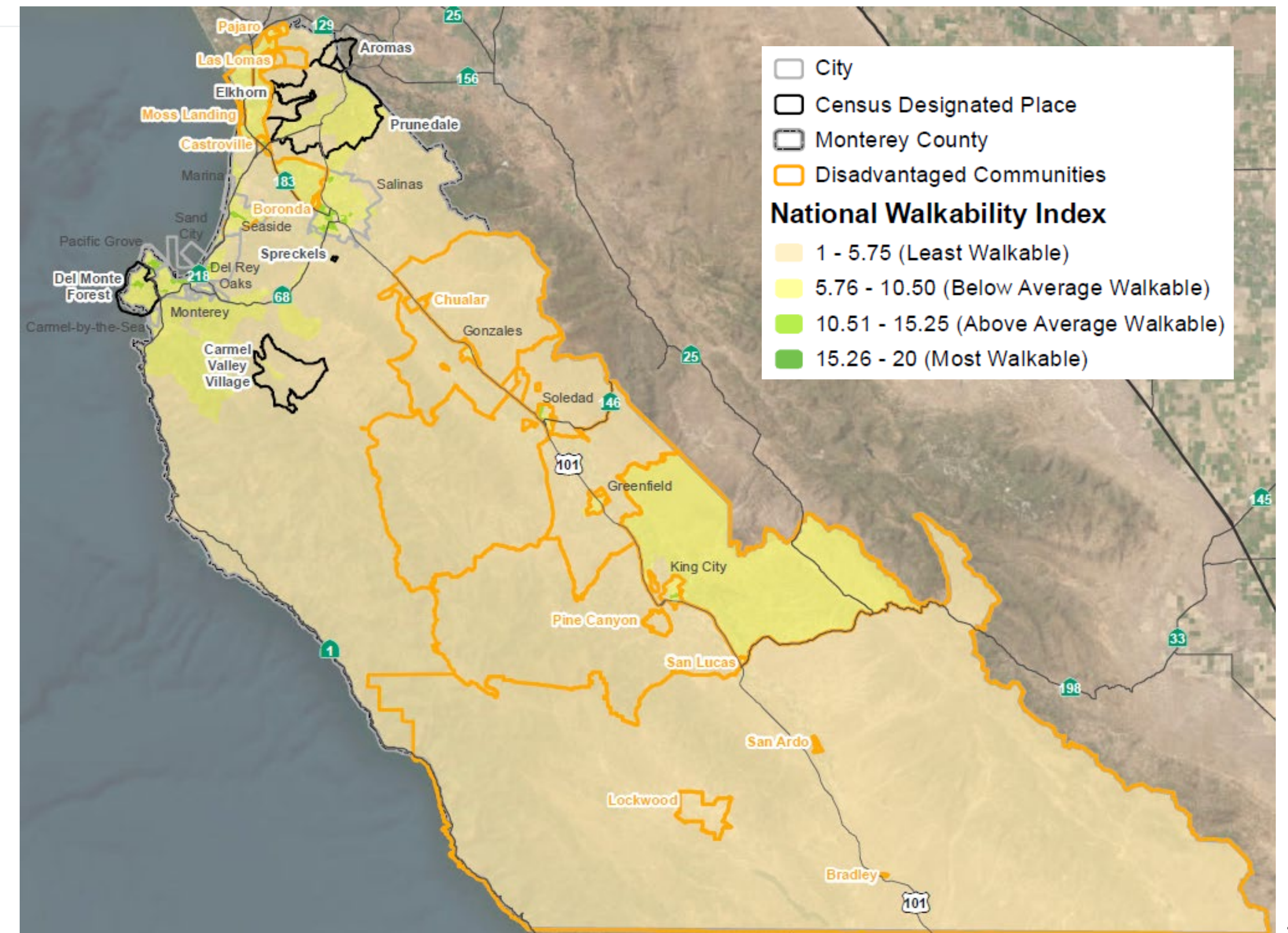


IF RESPONDENTS HAVE ACCESS TO A HEALTHY LIFESTYLE



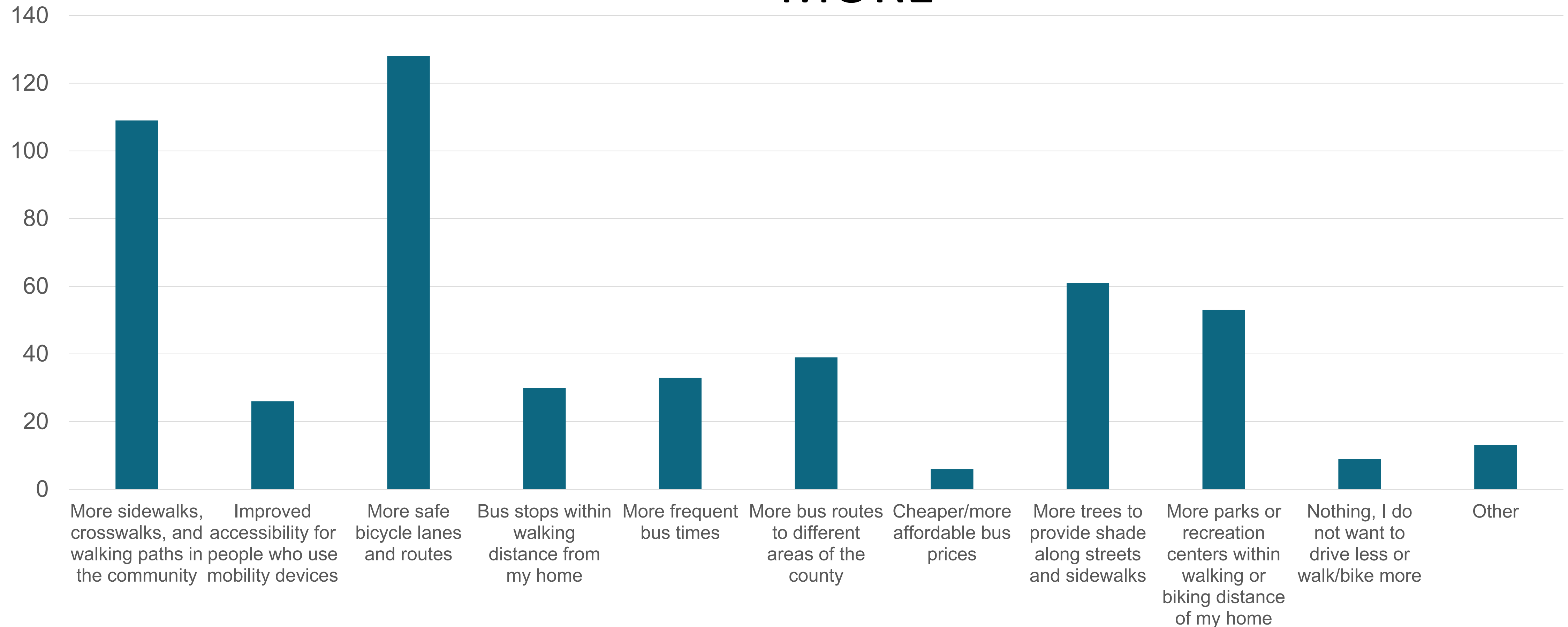
ACCESS TO PHYSICAL ACTIVITY AND RECREATIONAL FACILITIES

- **EJCAC Meeting #1**
 - Ranked #6 out of 6 topic areas
- **Existing Conditions Assessment**
 - Walkability
 - Vehicle Collisions
 - Access to parks
 - Bike routes
- **Community Survey Primary Concerns**
 - Less crime/safer neighborhoods
 - More sidewalks, crosswalks, and walking paths
 - More safe bicycle lanes and routes





WHAT WOULD ENCOURAGE RESPONDENTS TO WALK/BIKE MORE



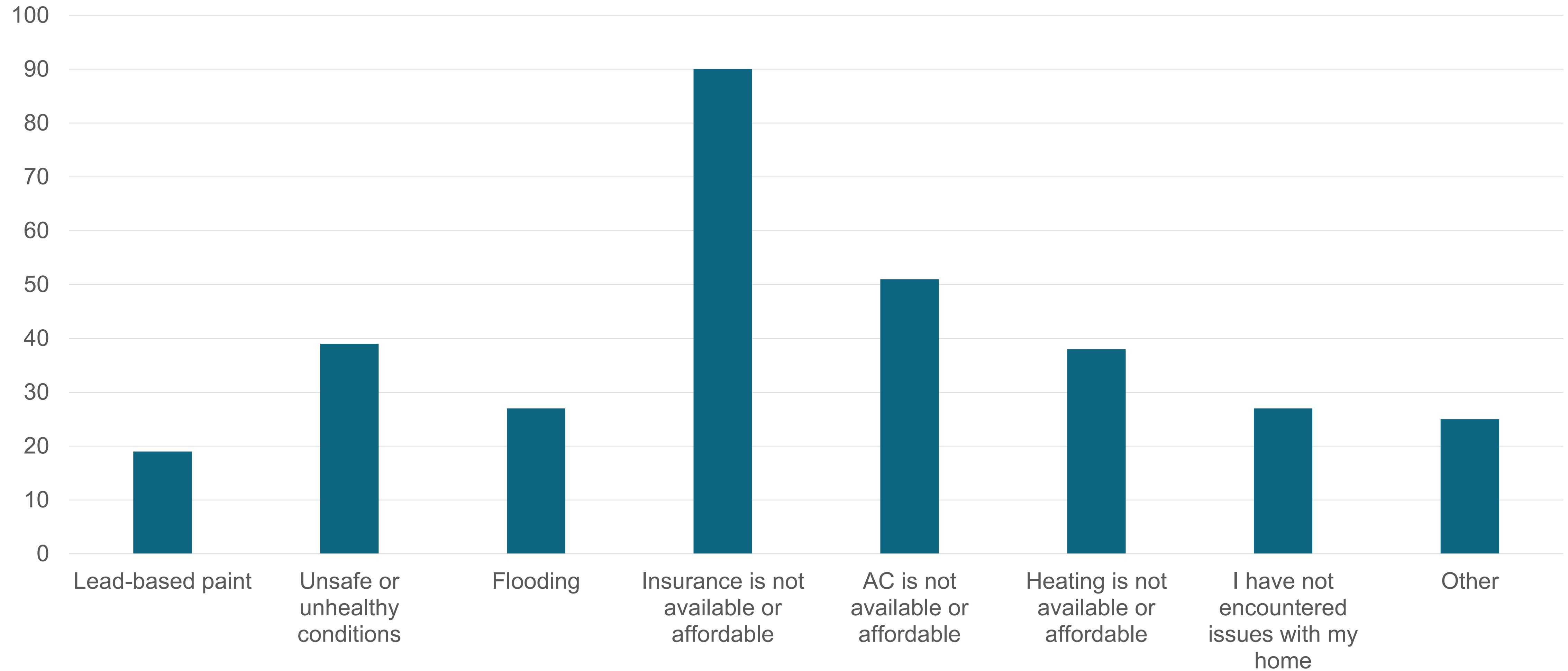


ACCESS TO SAFE AND SANITARY HOMES

- **EJCAC Meeting #1**
 - Ranked #4 out of 6 topic areas
- **Existing Conditions Assessment**
 - Housing burden: low-income and high housing costs
 - Tract 6053011304 (San Lucas), 76 percentile
 - Tract 6053010504 (Boronda), 55 percentile
 - Tract 6053014107 (Fort Ord), 69 percentile
 - Tract 6053010101 (Pajaro), 56 percentile
 - Children's Lead Risk from Housing
 - Tract 6053011303 (Pine Canyon), 51 percentile
 - Tract 6053011101 (South County – Fort Romie), 79 percentile
 - Tract 6053014601 (Moss Landing, Las Lomas), 64 percentile
 - Tract 6053010101 (Pajaro), 89 percentile
- **Community Survey Primary Concerns**
 - Available/affordable insurance
 - Available/affordable AC/heating
 - Lead-based paint
 - Affordable housing

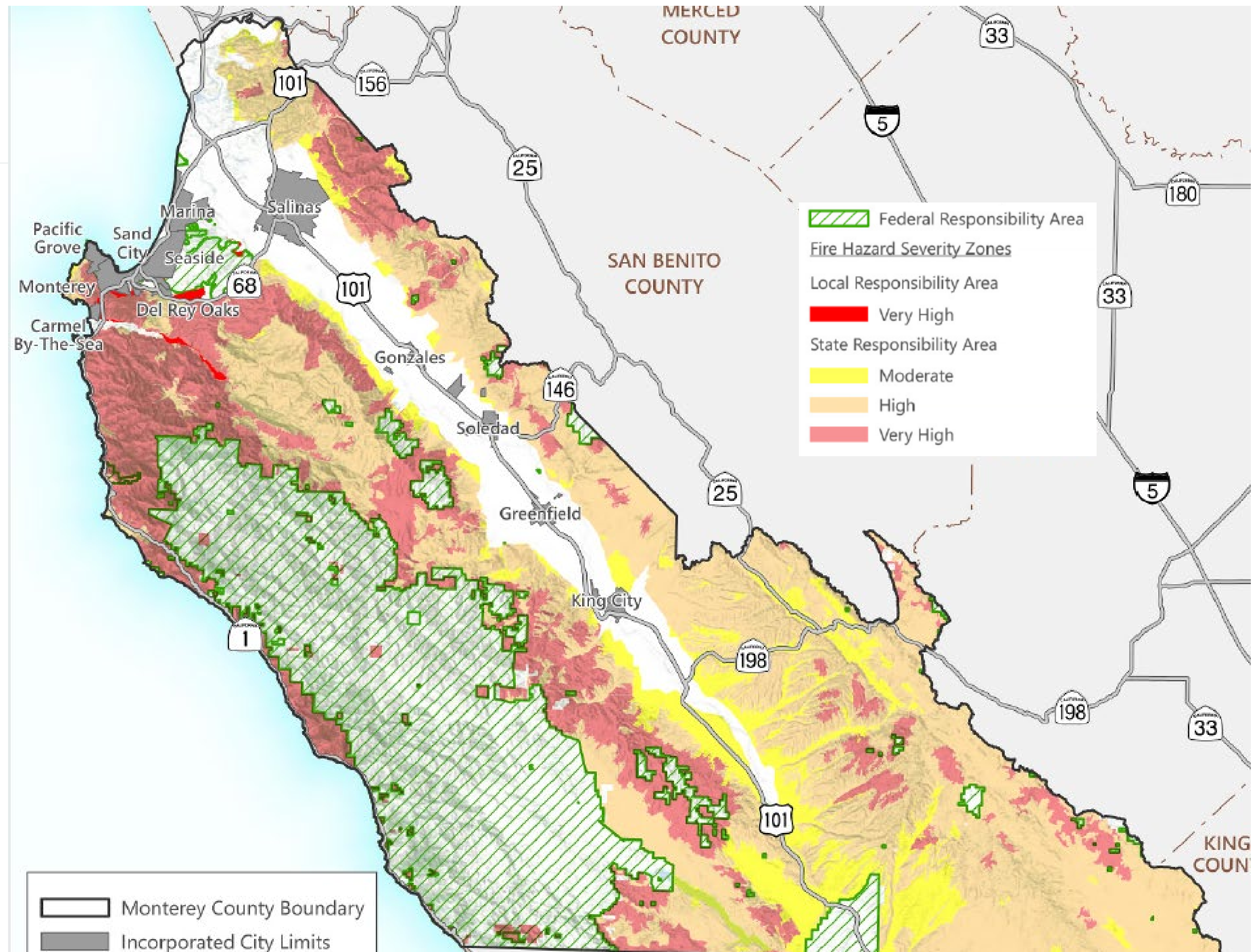


ISSUES RESPONDENTS HAVE WITH THEIR HOMES



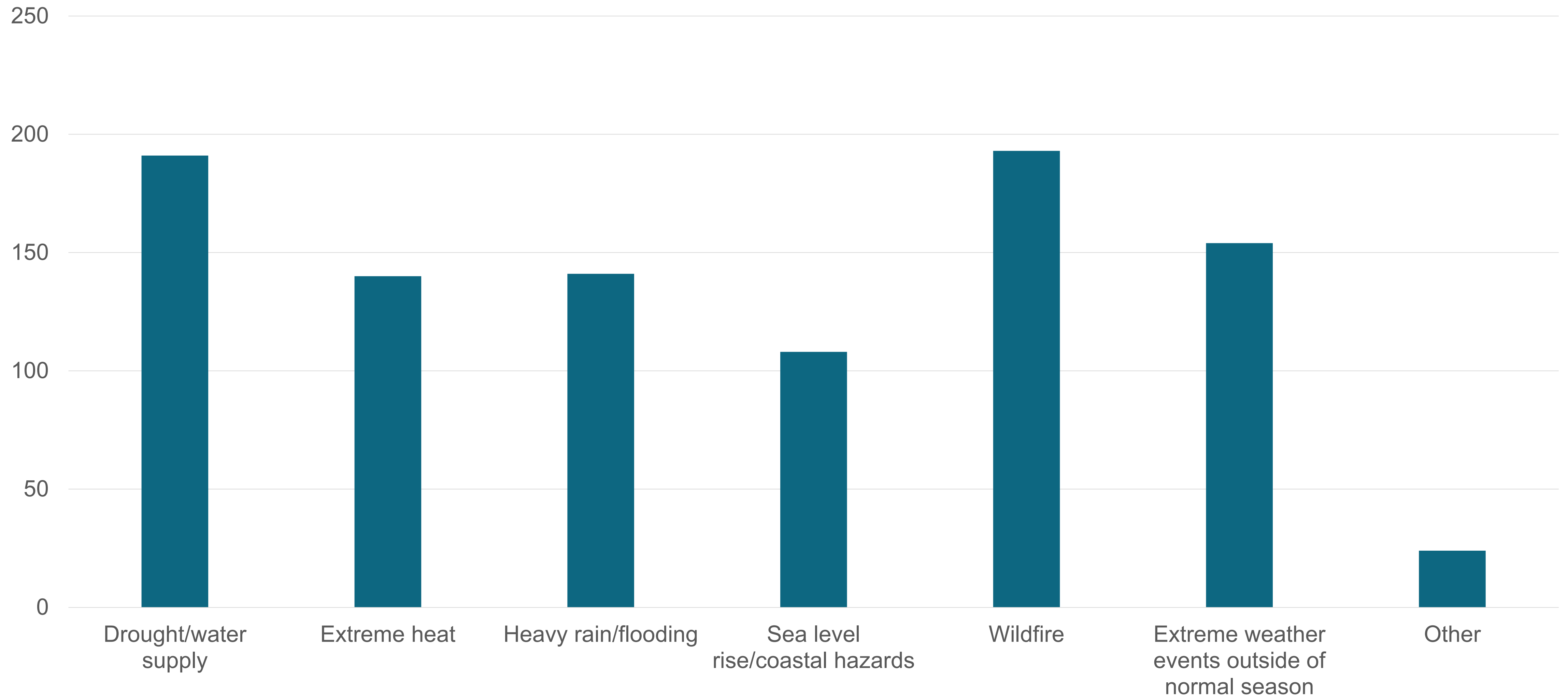
EXPOSURE TO UNIQUE OR COMPOUNDED HEALTH RISKS

- **EJCAC Meeting #1**
 - Ranked #3 out of 6 topic areas
- **Existing Conditions Assessment**
 - Wildfire
 - Extreme heat
 - Extreme precipitation and flooding
 - Drought/water shortage
- **Community Survey Primary Concerns**
 - Wildfire
 - Drought/water supply
 - Extreme weather events



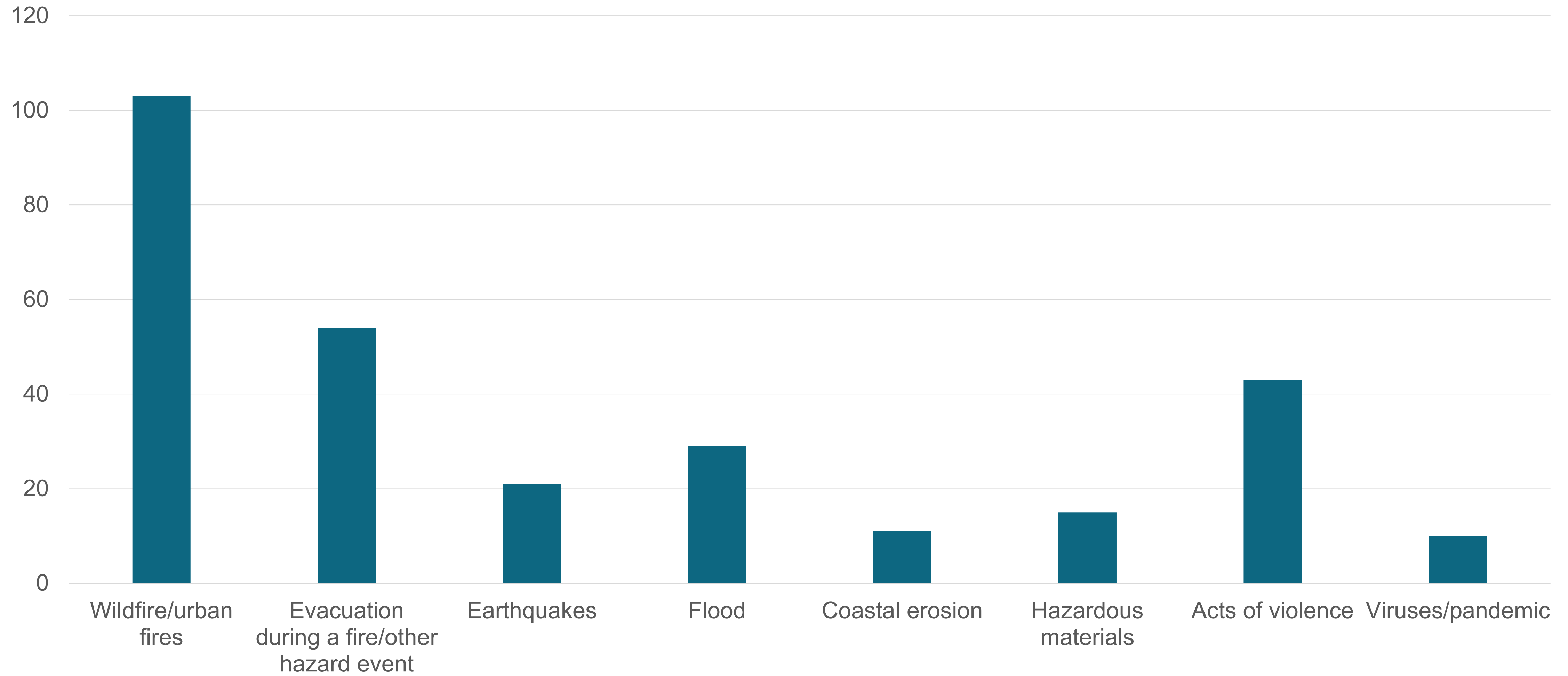


THE MOST CONCERNING EFFECTS OF CLIMATE CHANGE



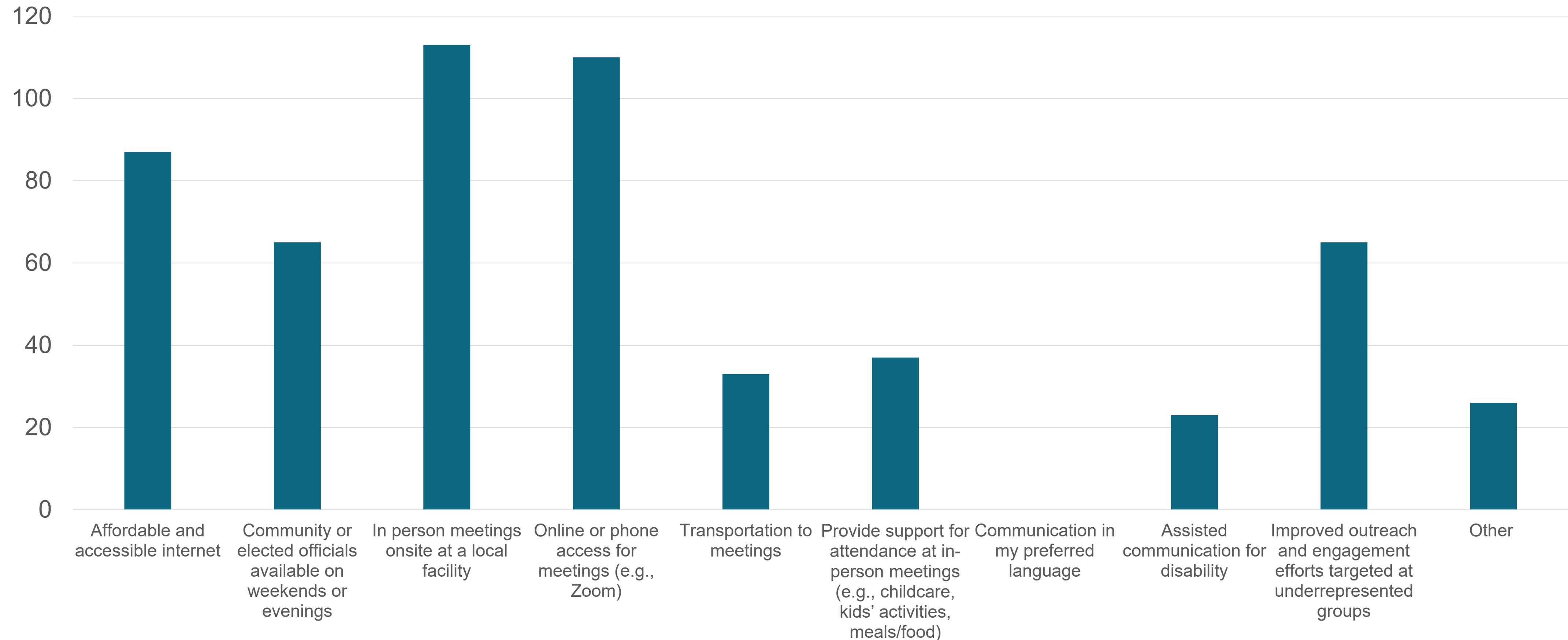


THE MOST CONCERNING HAZARDS





FACTORS THAT MAKE IT EASIER TO PARTICIPATE IN GOV. DECISIONS



slido



Join at slido.com
#3750273

slido



How well would you say the Community Survey results captured the key issues in the County?

slido



What other issue areas would you like to see investigated more thoroughly in the Existing Conditions Assessment?



EMERGENCY EVACUATION ROUTE ANALYSIS REQUIREMENTS

AB 747

Requires local governments to identify evacuation routes and evaluate their capacity, safety, and viability under a range of emergency scenarios.

- Select Emergency Scenarios

SB 99

Requires local governments to identify residential developments in hazard areas that do not have at least two emergency evacuation routes.

- Define Evacuation Routes

AB 1409

Requires local governments to identify evacuation locations.

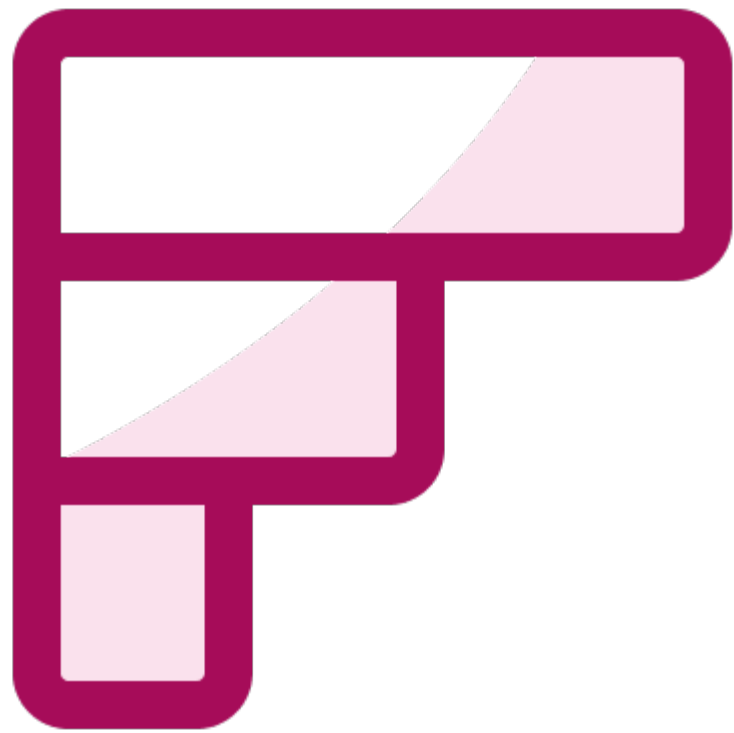
- Identify Evacuation Locations

slido



Do you feel prepared for an evacuation?

slido



What are your biggest concerns with evacuation?

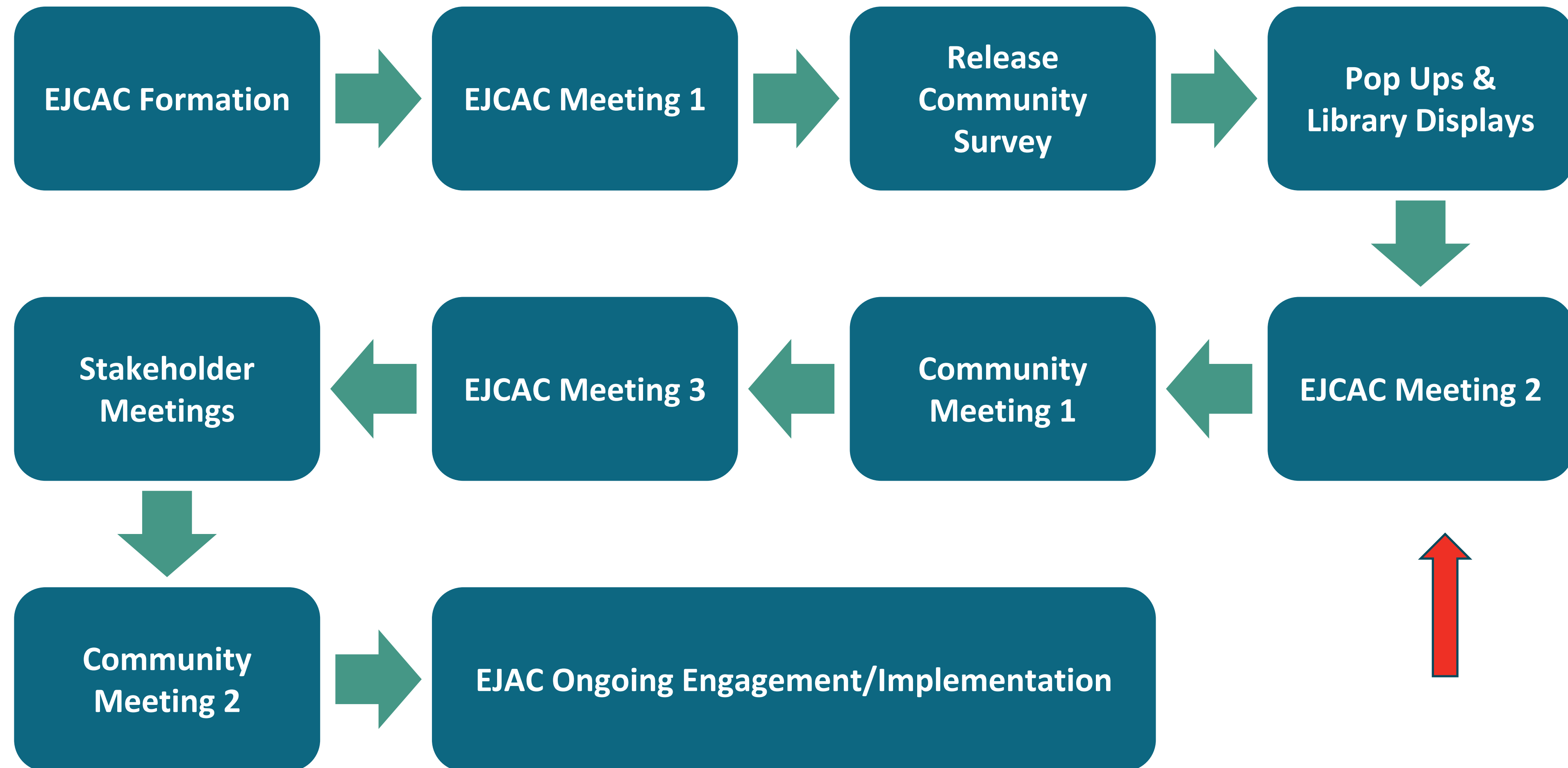
slido



What do you need for an evacuation?



NEXT STEPS





LEARN MORE AND STAY UPDATED

HOUSING AND COMMUNITY DEVELOPMENT

Announcements

Development Services

Planning Services

Permit Center

GIS / Maps

About Us



Current Planning

- General Information
- Getting Started
- Condition Compliance
- Land Use Regulations
- Committees, Hearings & Agendas

Advance Planning

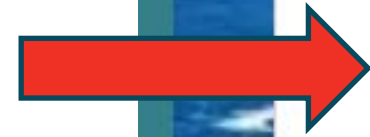
- Ordinances & Plans Under Development
- General Plan Elements Updates

Community Development Project & Program Financing

- Urban County - Community Development Block Grants
- Local Early Action Planning (LEAP) Grant
- Local Housing Trust Fund
- Permanent Local Housing Allocation (PLHA)
- Planning Grant Program
- Regional Early Action Planning Grant (REAP)
- Sustainable Agricultural Land Conservation Program

Housing Programs

- Housing Related Reports & Studies
- Housing Advisory Committee
- Affordable Housing Programs
- Housing Element
- Inclusionary Housing Waitlist Sign up



<https://www.co.monterey.ca.us/GeneralPlanUpdates>

THANK YOU



Questions or Feedback?

County contact: Edgar Sanchez

Phone: (831) 783-7058

GeneralPlanUpdates@co.monterey.ca.us

Harris Contact: Sydnie Margallo

Sydnie.Margallo@weareharris.com