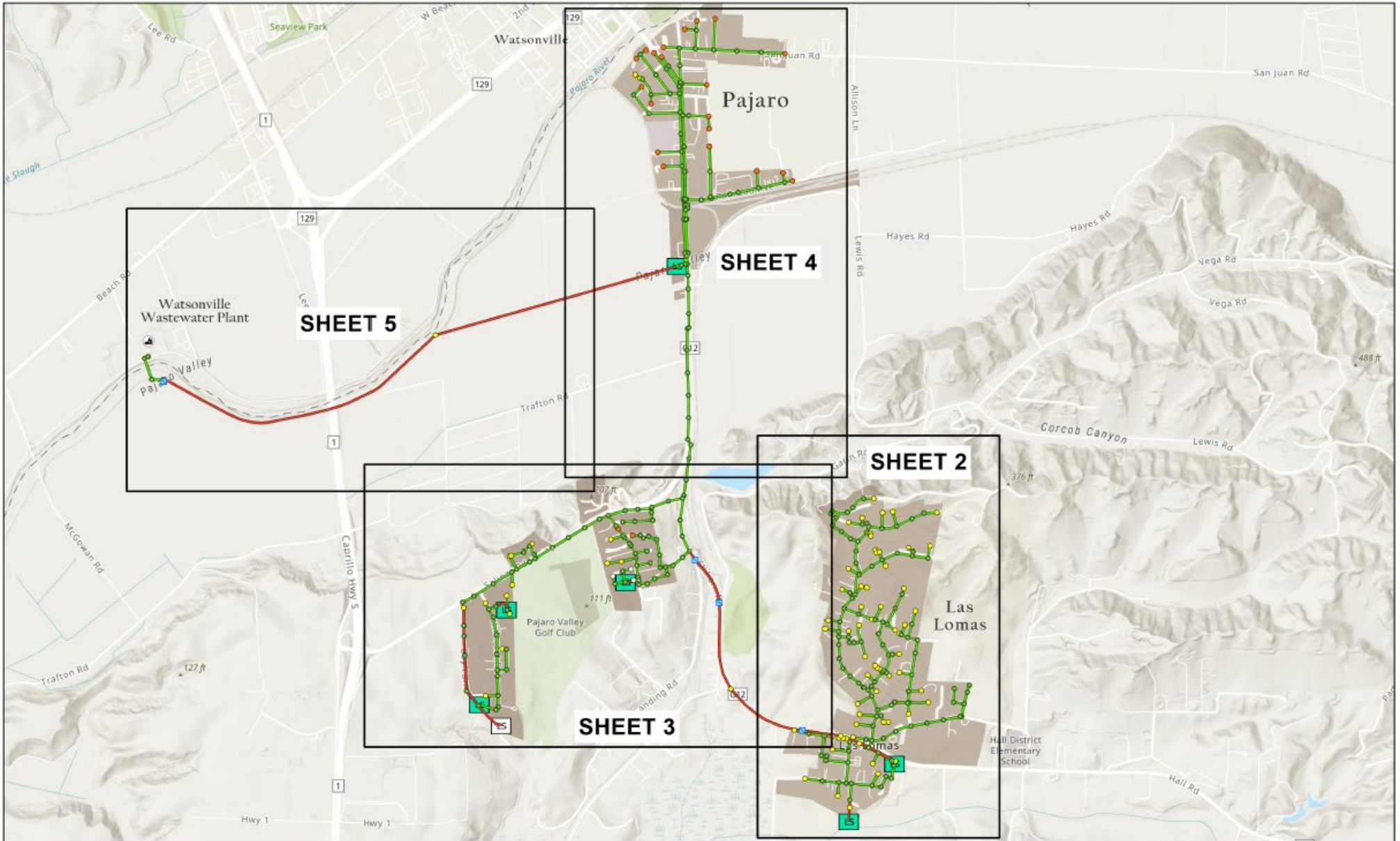


IMAGE 1 OF 5 - SHOWING THE MAP OF PAJARO CSD SANITARY SEWER SYSTEM



<p>1 of 5</p>	<p>Sanitary Sewer System</p>	<p>— SS Pressurized Main (FM) (22,520 feet)</p> <p>— SS Gravity Main (88,630 feet)</p> <p>LS Lift Station (CSD)</p>	<p>LS Lift Station (Private)</p> <p>● SS Manhole</p> <p>□ SS Air Relief Valve</p> <p>● SS Cleanout</p>	<p>● SS Lamp Hole</p> <p>○ Undetermined Structure</p> <p>■ Pajaro County Sanitation District</p>			
	<p>PAJARO COUNTY SANITATION DISTRICT, MONTEREY COUNTY CA</p>						

IMAGE 2 OF 5 - SHOWING THE MAP OF PAJARO CSD SANITARY SEWER SYSTEM, LAS LOMAS LIFT STATION

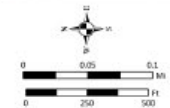


2
of
5

Sanitary Sewer System

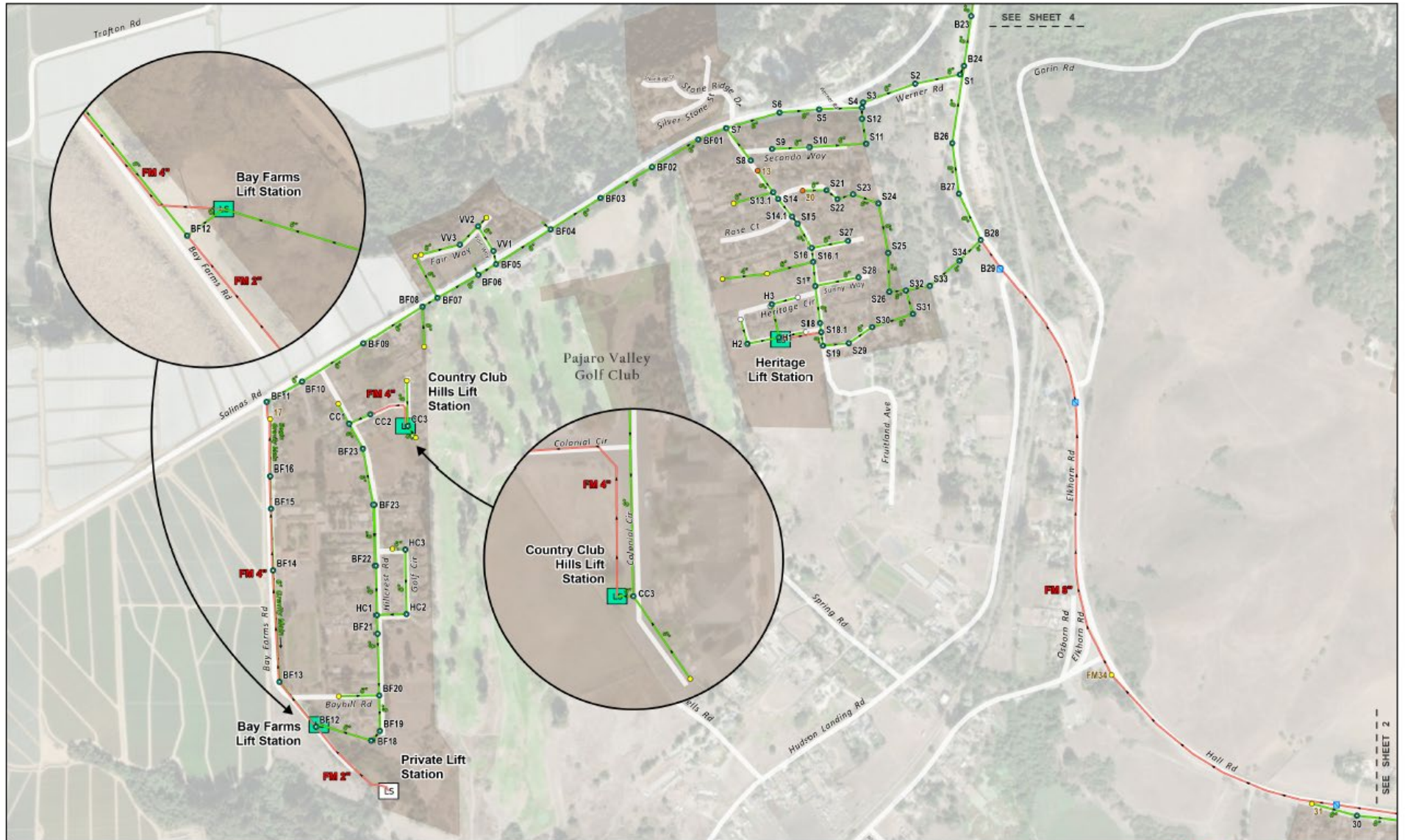
PAJARO COUNTY SANITATION DISTRICT, MONTEREY COUNTY CA

- SS Pressurized Main (FM)
- SS Gravity Main
- LS Lift Station (CSD)
- SS Manhole
- SS Air Relief Valve
- SS Cleanout
- Pajaro County Sanitation District



Map date: 4/9/2024, Monterey County Public Works, Facilities and Parks

IMAGE 3 OF 5 - SHOWING THE MAP OF PAJARO CSD SANITARY SEWER SYSTEM, BAY FARMS LIFT STATION & COUNTRY CLUB HILLS LIFT STATION



3 of 5	<h3>Sanitary Sewer System</h3>	<p>— SS Pressurized Main (FM)</p> <p>— SS Gravity Main</p> <p>LS Lift Station (CSD)</p> <p>LS Lift Station (Private)</p> <p>● SS Manhole</p> <p>● SS Air Relief Valve</p> <p>● SS Cleanout</p> <p>● SS Lamp Hole</p> <p>○ Undetermined Structure</p> <p>■ Pajaro County Sanitation District</p>	<p>0 0.05 0.1 Miles</p> <p>0 250 500 Feet</p>		
	PAJARO COUNTY SANITATION DISTRICT, MONTEREY COUNTY CA				

IMAGE 4 OF 5 - SHOWING THE MAP OF PAJARO CSD SANITARY SEWER SYSTEM, PAJARO LIFT STATION

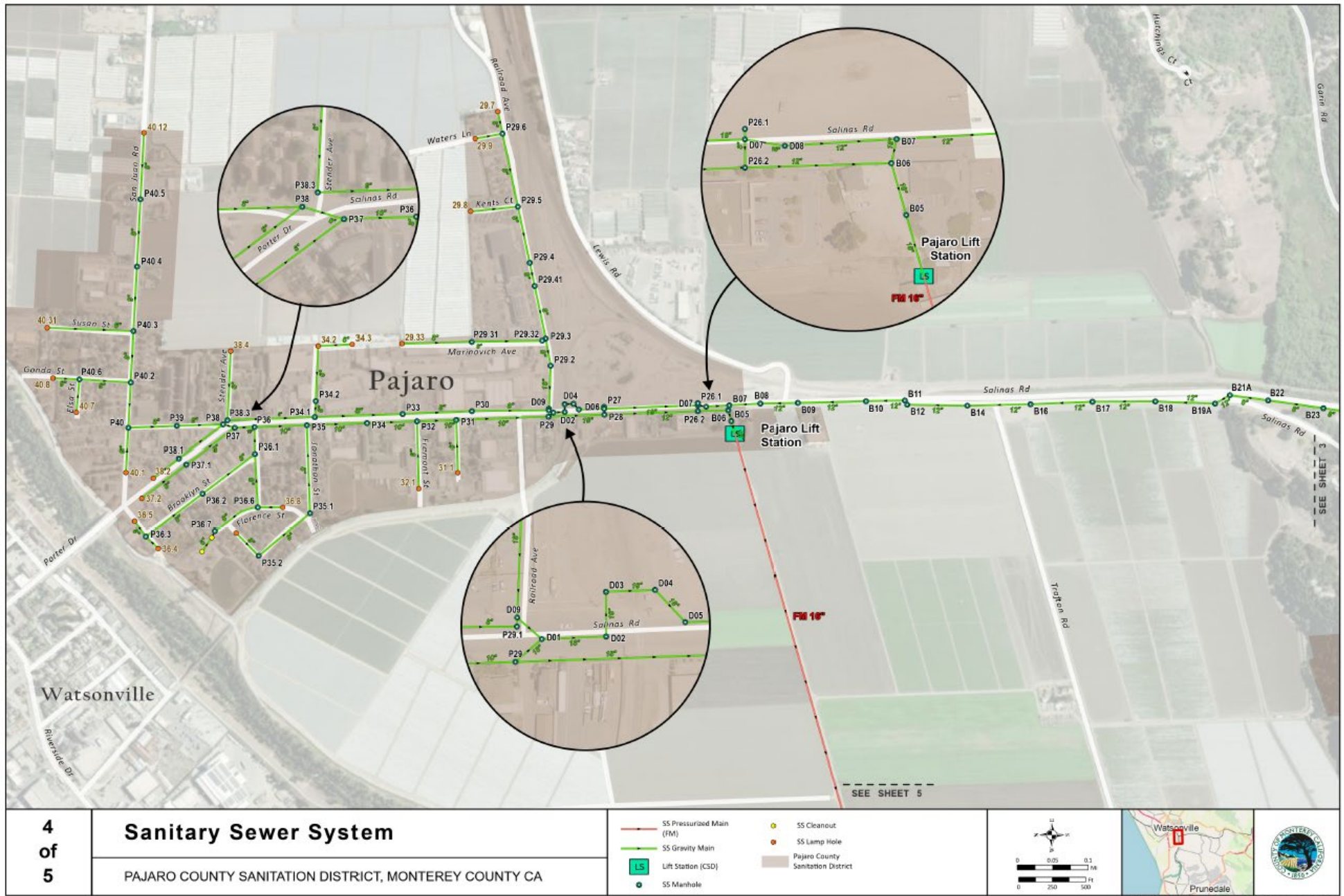
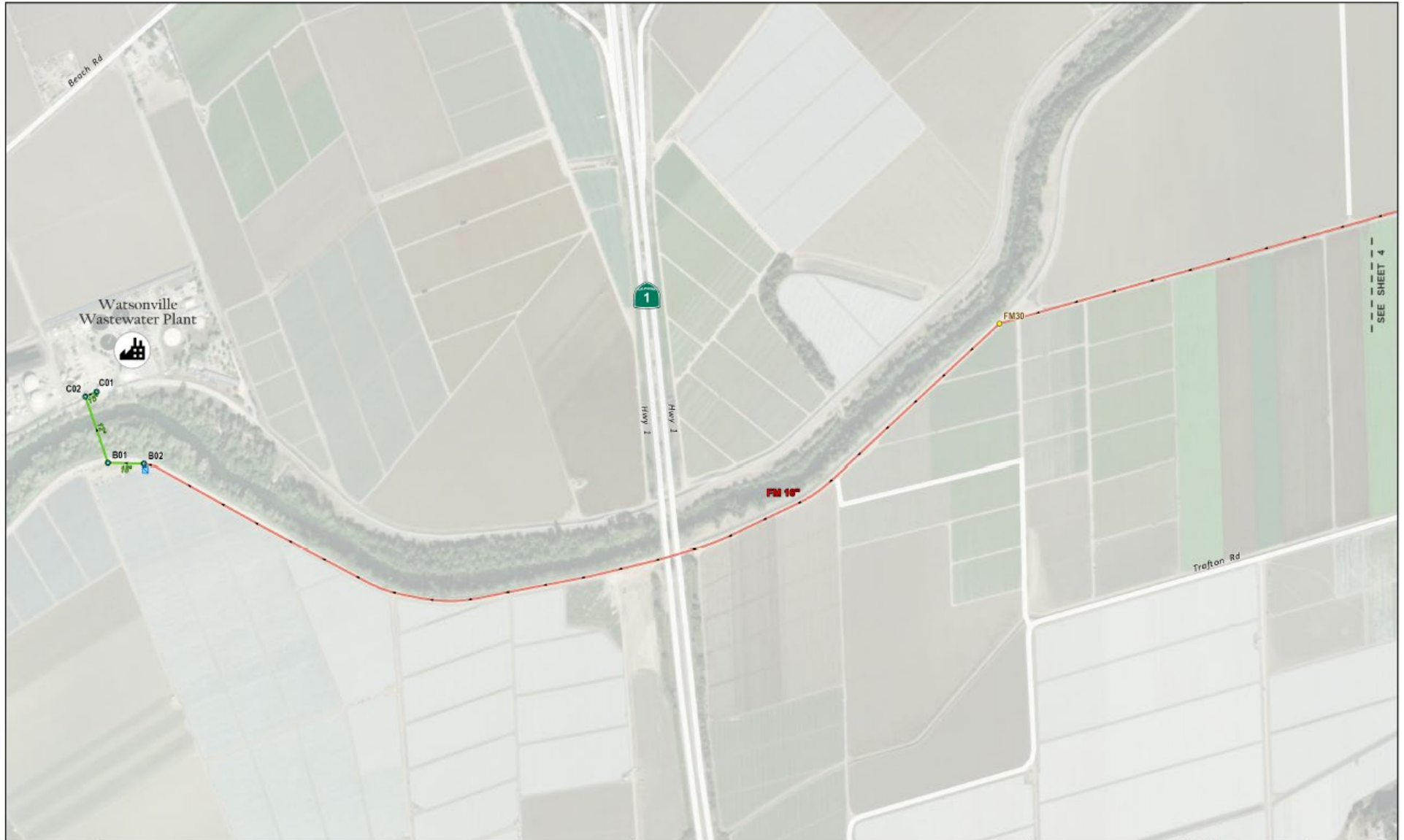


IMAGE 1 OF 5 - SHOWING THE MAP OF PAJARO CSD SANITARY SEWER SYSTEM, WATSONVILLE WASTEWATER PLANT CROSSING STATE HIGHWAY 1



<p>5 of 5</p>	<p>Sanitary Sewer System</p>	<p>— SS Pressurized Main (FM)</p> <p>— SS Gravity Main</p> <p>● SS Manhole</p>	<p>■ SS Air Relief Valve</p> <p>● SS Cleanout</p>			
	<p>PAJARO COUNTY SANITATION DISTRICT, MONTEREY COUNTY CA</p>					

Map date: 4/9/2024, Monterey County Public Works, Facilities and Parks

