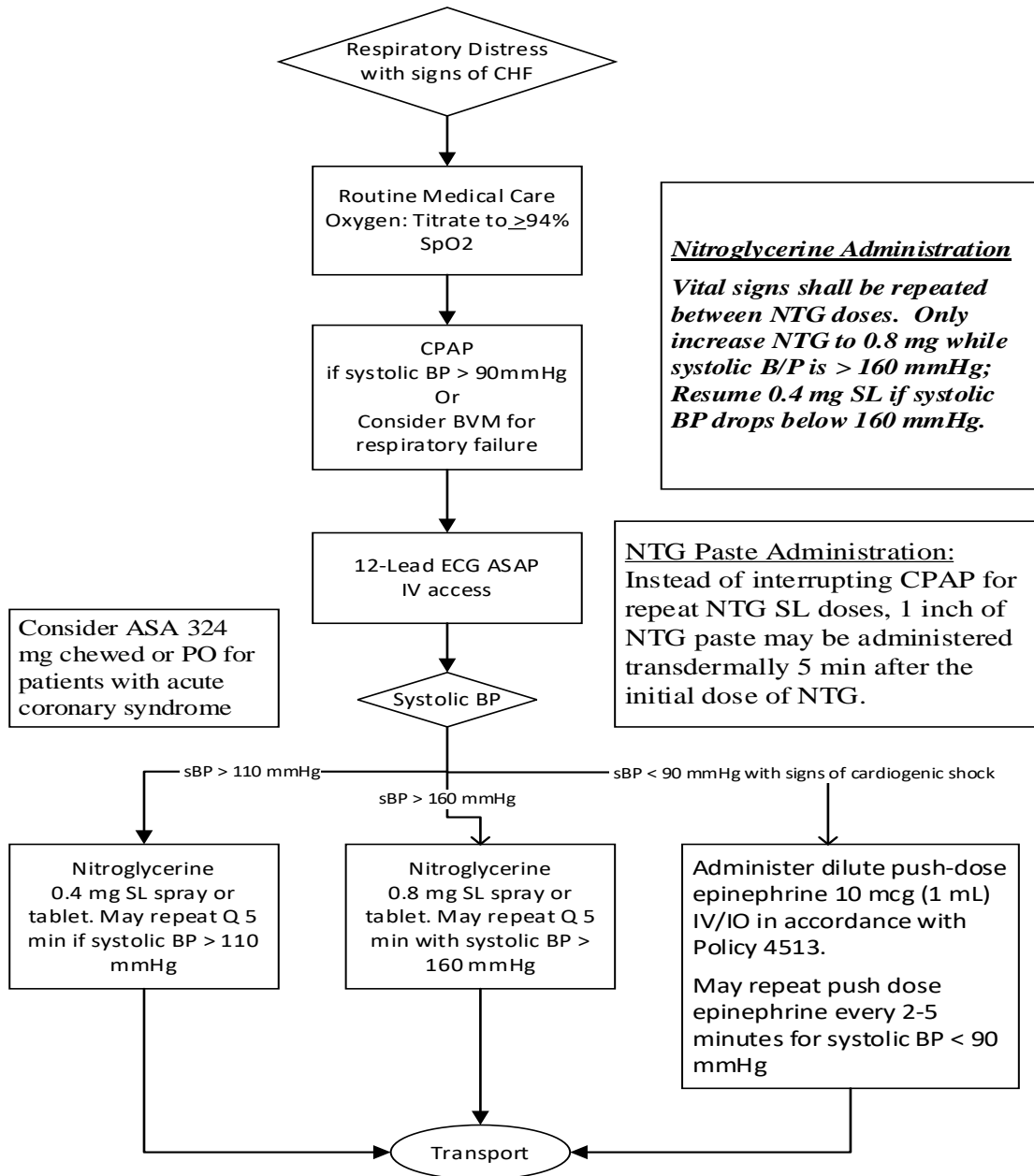




PULMONARY EDEMA

ALS AND BLS



NOTES:**Contraindications for NTG:**

- Known sensitivity to nitrate medications
- Have taken Phosphodiesterase Inhibitors within the past 24 hours, such as sildenafil (Viagra), tadalafil (Cialis), vardenafil (Levitra or Staxyn), or avanafil (Stendra).
- Systolic BP < 110mmHg
- Age 12 years or younger

Warnings:

Avoid placing defibrillation pads over NTG paste or a preexisting NTG patch if defibrillation pads are used. If necessary, remove the NTG paste or NTG patch, wipe off the area, and then place defibrillation pads.

See Policy 4503 for CPAP contraindications.