

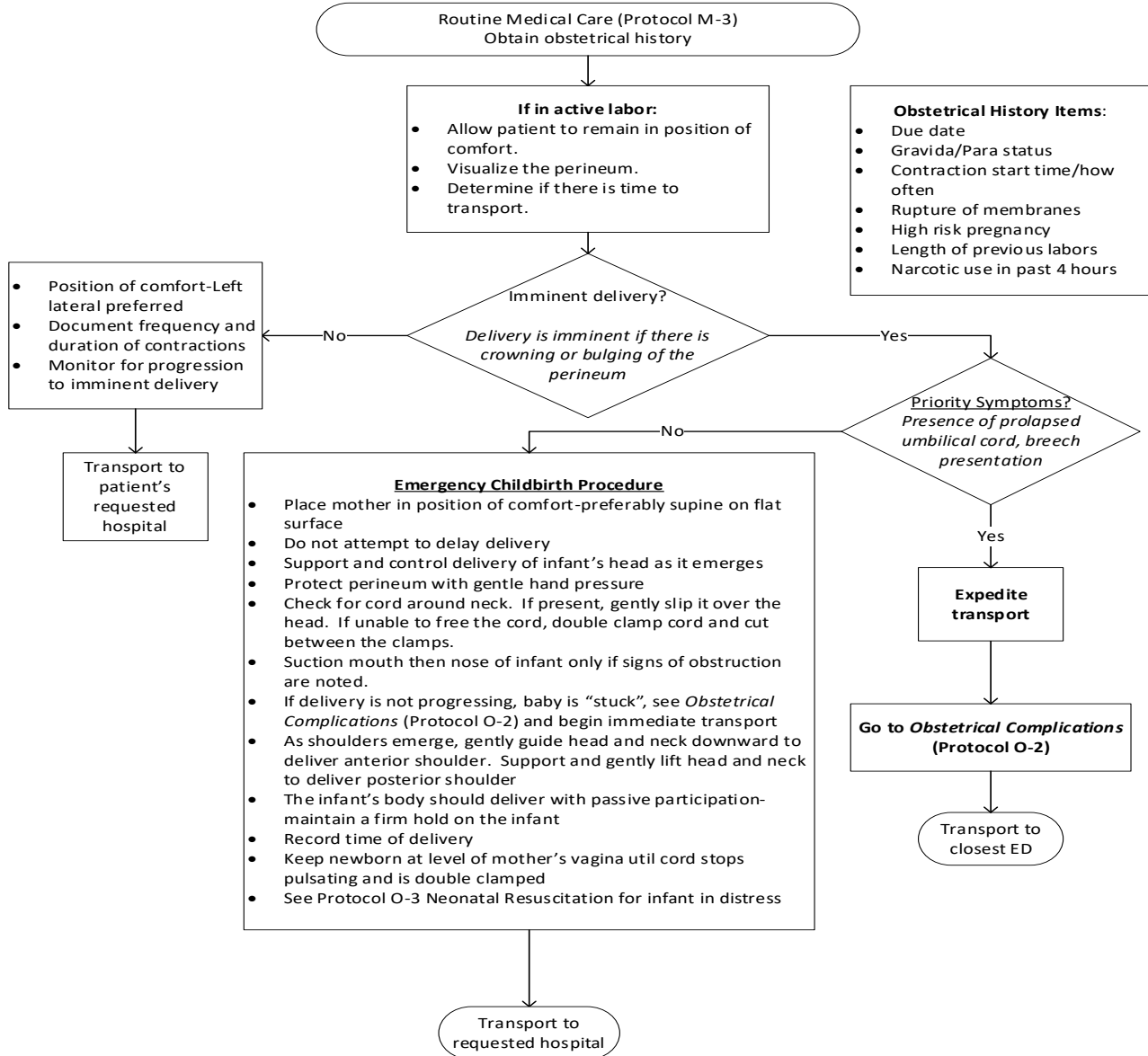
# Monterey County EMS System Policy



Protocol Number: O-1  
 Effective Date: 7/1/2025  
 Review Date: 6/30/2028

## CHILDBIRTH

### ALS and BLS CARE



## Postpartum Care: Infant

- ✓ Suction mouth and nose only if signs of obstruction are noted
- ✓ Respirations should begin within 15 seconds after stimulating the neonate. If not, begin artificial ventilations at 40-60 breaths/min
- ✓ If apneic, unresponsive, persistent central cyanosis, or HR < 100, begin neonatal resuscitation
- ✓ Dry baby and wrap in warm blanket
- ✓ After umbilical cord stops pulsating, apply clamps 6" and 8" from infant's abdominal wall and cut between clamps
- ✓ Document 1 and 5 minute APGAR scores
- ✓ Monitor and reassess

## APGAR Score Criteria

| Component of Acronym | Score of 0                 | Score of 1                         | Score of 2                              | Measures            |
|----------------------|----------------------------|------------------------------------|---|---------------------|
| <b>Appearance</b>    | All blue, pale             | Cyanosis to extremities            | No cyanosis                             | Skin Color          |
| <b>Pulse</b>         | Absent                     | <100 beats/min                     | >100 beats/min                          | Heart rate          |
| <b>Grimace</b>       | No response to stimulation | Grimace/feeble cry when stimulated | Sneeze/cough/pulls away when stimulated | Reflex irritability |
| <b>Activity</b>      | None/limp                  | Some flexion                       | Active movement                         | Muscle tone         |
| <b>Respiration</b>   | Absent                     | Weak or irregular                  | Good/crying                             | Breathing           |

## Postpartum Care: Mother

- ✓ Placenta should deliver in 20-30 minutes. If delivered, collect in plastic bag and bring to the hospital. Do not pull cord to facilitate placenta delivery and do not delay transport awaiting placenta delivery
- ✓ If the perineum is torn and bleeding, apply direct pressure with sanitary pads
- ✓ For postpartum hemorrhage-see Obstetrical Complications (Protocol O-2)
- ✓ Initiate transport once delivery of the child is complete and mother can tolerate movement