

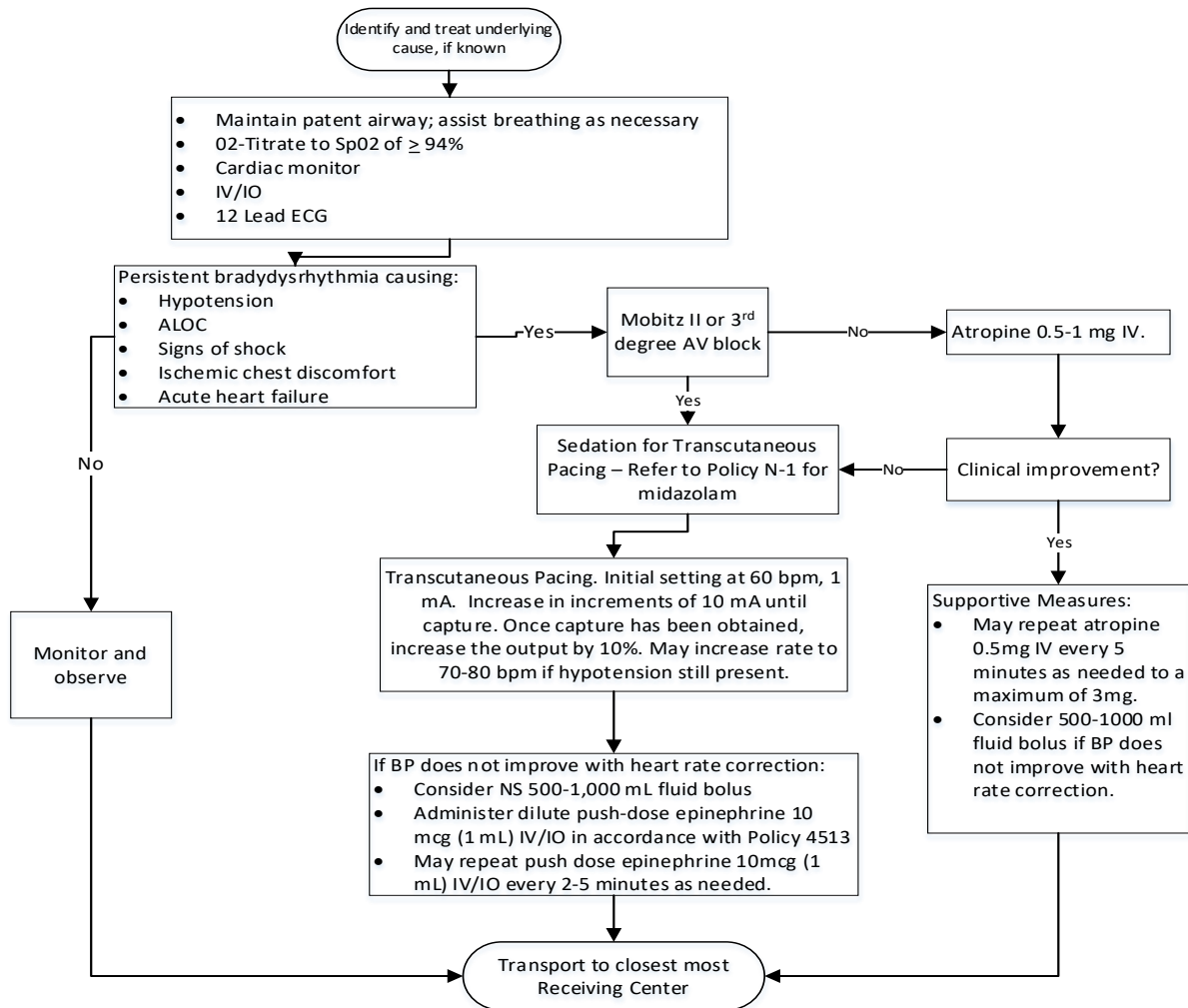


SYMPTOMATIC BRADYCARDIA

BLS CARE

Follow Routine Medical Care Protocol (M-3)

ALS CARE



Consider additional causes of symptomatic bradycardia such as beta blocker or calcium channel blocker OD. Follow Protocol E-5 Overdose and Poisoning if evidence of OD is present.

Note: Push-dose epinephrine requires dilution. See Policy #4513.