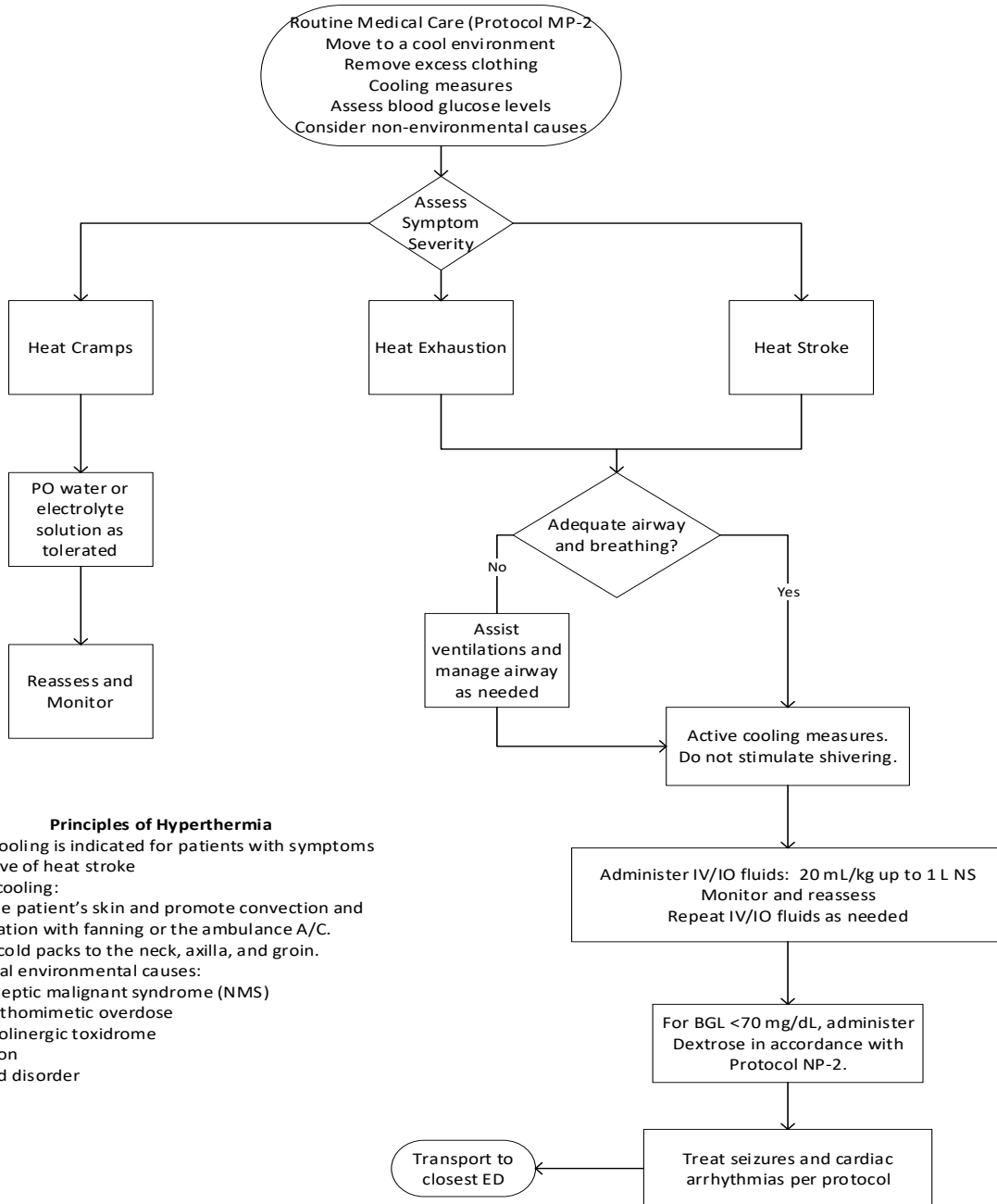




HEAT EMERGENCIES - PEDIATRIC

ALS AND BLS CARE



Principles of Hyperthermia

- Rapid cooling is indicated for patients with symptoms indicative of heat stroke
- Active cooling:
 - Wet the patient's skin and promote convection and evaporation with fanning or the ambulance A/C.
 - Apply cold packs to the neck, axilla, and groin.
- Potential environmental causes:
 - Neuroleptic malignant syndrome (NMS)
 - Sympathomimetic overdose
 - Anticholinergic toxidrome
 - Infection
 - Thyroid disorder