



County of Monterey

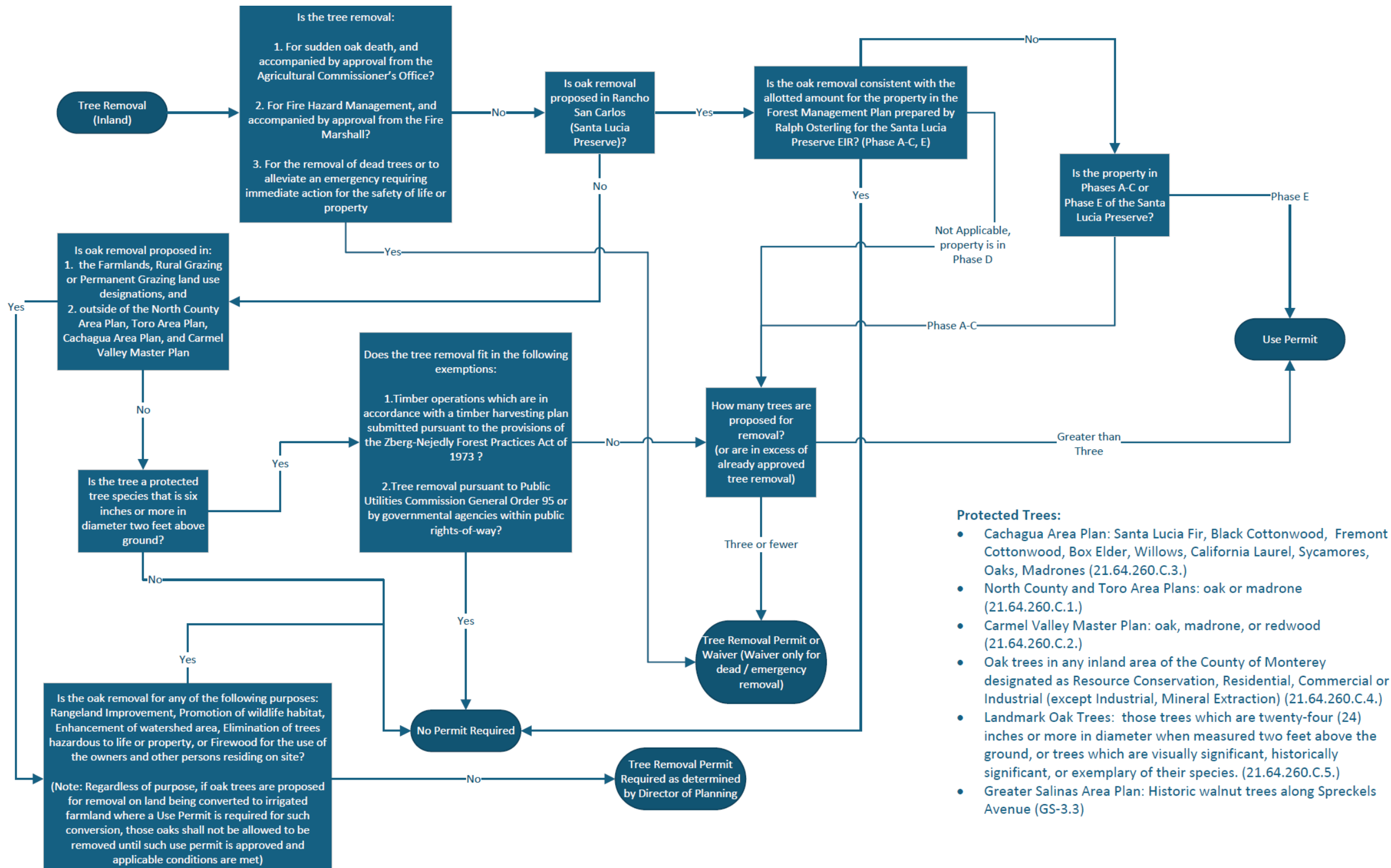
HOUSING AND COMMUNITY DEVELOPMENT
Planning · Building · Housing

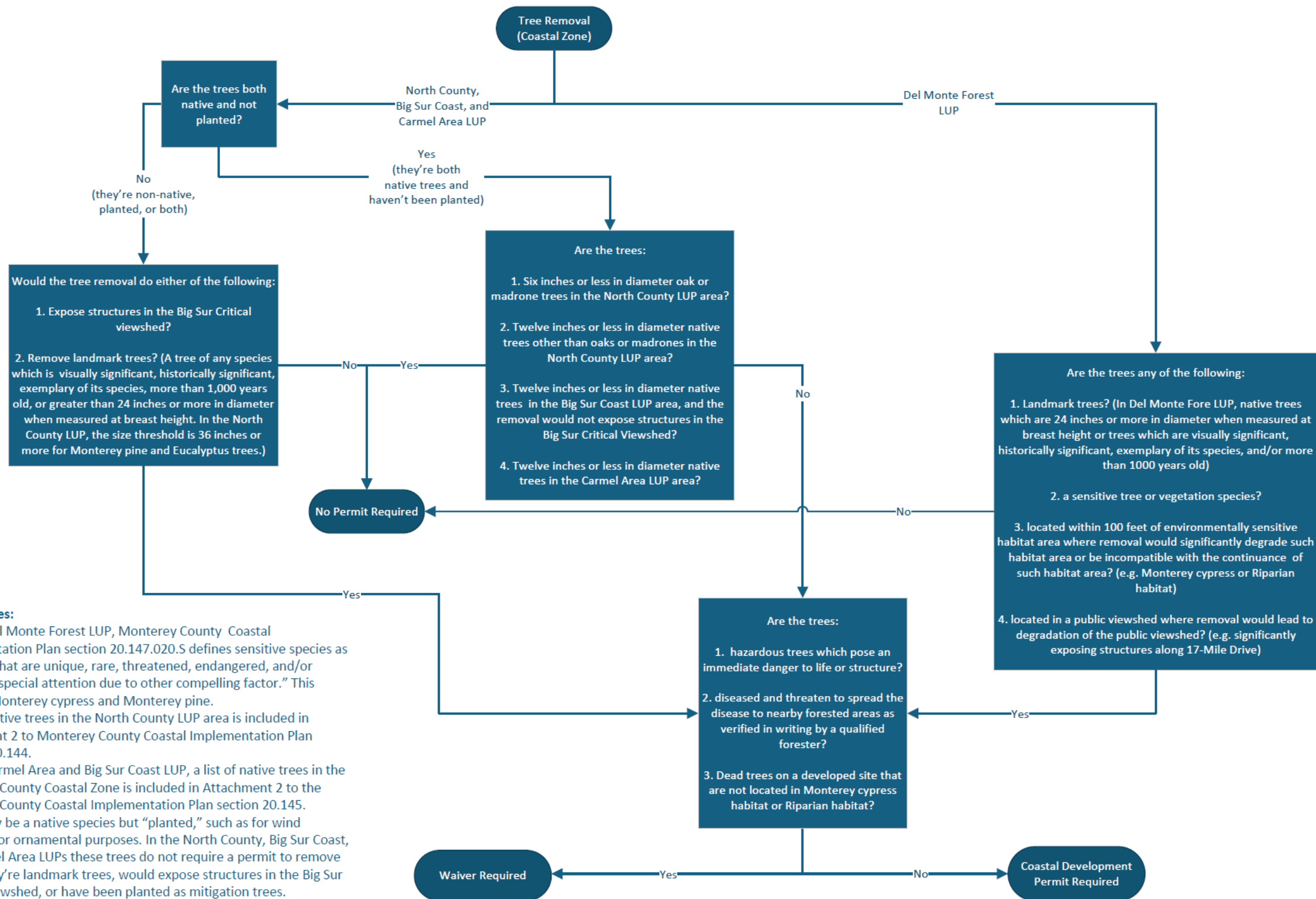
1441 Schilling Place, 2nd Floor
Salinas, CA 93901
O: 831 755 5025

Appendix A

Standard Application Checklist for Single Family Residential Development: Planning Permit Requirements for Tree Removal and Development on Slopes

(Updated June 4, 2025)





Additional Notes:

- For the Del Monte Forest LUP, Monterey County Coastal Implementation Plan section 20.147.020.S defines sensitive species as “Species that are unique, rare, threatened, endangered, and/or worthy of special attention due to other compelling factor.” This includes Monterey cypress and Monterey pine.
- A list of native trees in the North County LUP area is included in Attachment 2 to Monterey County Coastal Implementation Plan Chapter 20.144.
- For the Carmel Area and Big Sur Coast LUP, a list of native trees in the Monterey County Coastal Zone is included in Attachment 2 to the Monterey County Coastal Implementation Plan section 20.145.
- A tree may be a native species but “planted,” such as for wind screening or ornamental purposes. In the North County, Big Sur Coast, and Carmel Area LUPs these trees do not require a permit to remove unless they’re landmark trees, would expose structures in the Big Sur Critical Viewshed, or have been planted as mitigation trees.

