

OVERVIEW OF GENERAL PLAN ELEMENTS UPDATES

County of Monterey Housing
and Community Development



PLANNING COMMISSION
9 NOVEMBER 2022

AGENDA

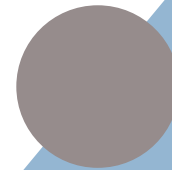
Policy for Equity

Housing Element Sixth Cycle Update

Safety Element Update + New Environmental Justice Element

Cohesive Policy Requirements

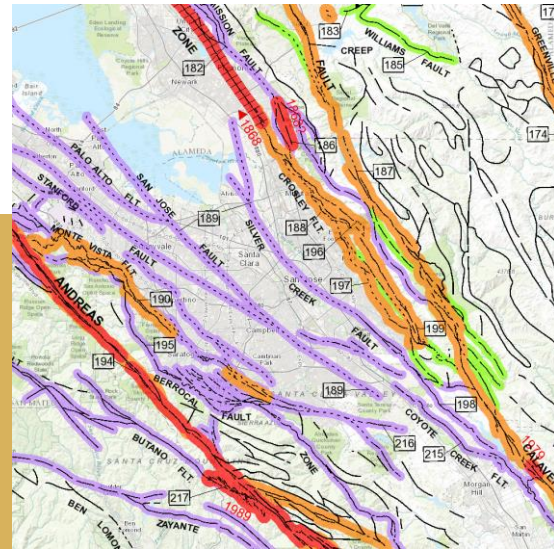
Community Engagement



POLICY FOR EQUITY



FAIR HOUSING



EARTHQUAKES,
FLOODS, FIRES

What are climate change adaptation and climate resilience?

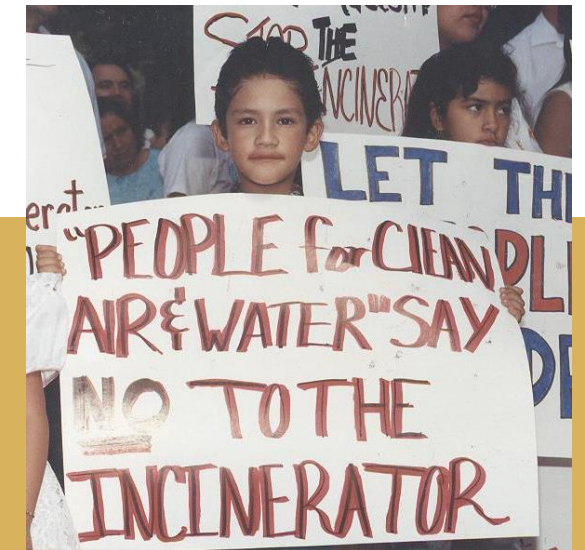
Climate change adaptation
The process of adjustment of human and natural systems to expected impacts or effects of climate change.

It includes adapting to short-term weather fluctuations and longer-term changes over decades, and it relates to behaviours, practices, skill sets, natural processes and anticipate short, medium and long-term changes.

Resilience
The ability of a human or natural system to withstand shocks and to cope with or rebound from them. The term encompasses the capacity of a system to face stressors—socioeconomic, market related, climate related.

Climate resilience
The capacity of a system to cope with, or recover from, disturbances while retaining the essential components of the original system.

CLIMATE CHANGE

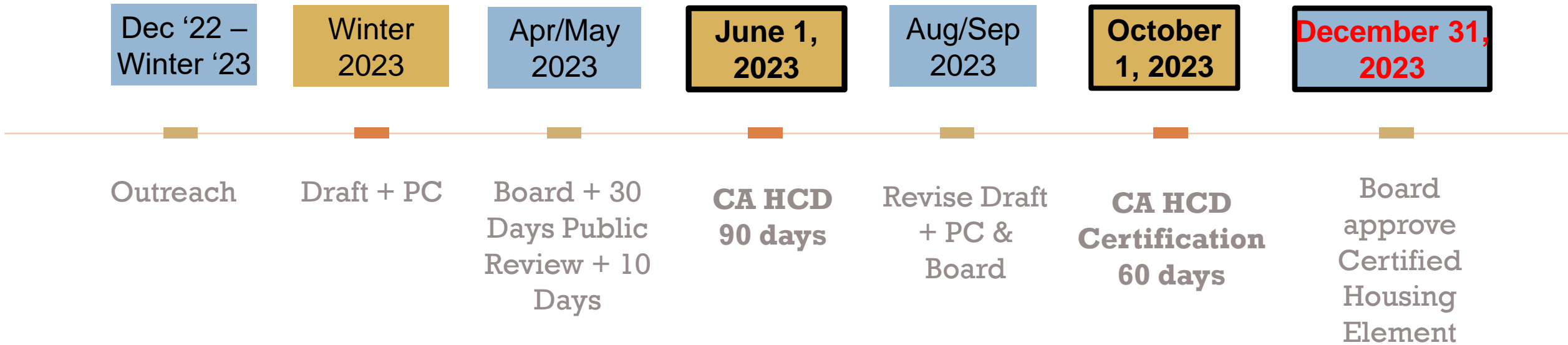


ENVIRONMENTAL
HEALTH BURDENS

HOUSING ELEMENT SIXTH CYCLE UPDATE

- Regional Housing Needs Assessment (RHNA)
- AB 686 – Affirmatively Furthering Fair Housing (AFFH)
- Disparities in Access
- Opportunity Areas
- Patterns over Time

HOUSING ELEMENT SIXTH CYCLE UPDATE



SAFETY ELEMENT UPDATE

- Identify unreasonable risks and policies for protection from such risks
- Robust analysis, goals, policies, and objectives to:
 - reduce flood hazard and increase flood protection;
 - reduce risk of wildland and urban fires;
 - prepare a vulnerability assessment to climate change impacts; and
 - create adaptation and resilience strategies
- AB 747 and SB 99

NEW ENVIRONMENTAL JUSTICE ELEMENT

- Decrease pollution exposure, increase community assets, and improve overall health
- Identify policies and objectives to improve air quality, promote public facilities, food access, safe and sanitary homes, and physical activity
- Promote civic engagement in public decision-making process
- Prioritize improvements and programs in disadvantaged communities

SAFETY ELEMENT UPDATE + NEW ENVIRONMENTAL JUSTICE ELEMENT



COHESIVE POLICY REQUIREMENTS



ENVIRONMENTAL JUSTICE



OBJECTIVES AND POLICIES to promote **safe and sanitary homes** in disadvantaged communities



OBJECTIVES AND POLICIES to **reduce any unique or compounded health risks** in disadvantaged communities



HOUSING



PROGRAMS to **conserve and improve the condition** of existing affordable housing stock



ANALYSIS of specific sites and zoning identified for housing suitability for **vulnerability to risks** from climate change such as increased flooding or drought induced fires



SAFETY

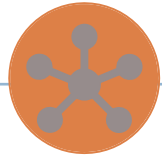


VULNERABILITY ASSESSMENT to identify types of assets, resources, and **populations that will be sensitive** to various climate change exposures



IDENTIFICATION of existing and planned development in **known at risk locations** to designate adequate and feasible infrastructure in these areas.

COMMUNITY ENGAGEMENT



WORKSHOPS

Community
Engagement Plan

PC,
Subcommittees,
Advisory Groups



FOCUS GROUPS

Minority
Resident
Business/Industry
Educators
ESL
Veterans
Disabled
Underserved



SURVEY

Online



COMMUNITY- BASED ORG.

Staff Outreach

Network with
Established
Groups



POP-UPS

Deploy staff and
interactive
materials at
strategic
locations

CONTACT

Jaime Scott Guthrie, AICP, Senior Planner

831.796.6414

GuthrieJS@co.monterey.ca.us

Please Include as CC:

Edgar Sanchez-Saenz, Assistant Planner

831.783.7058

SanchezE8@co.monterey.ca.us